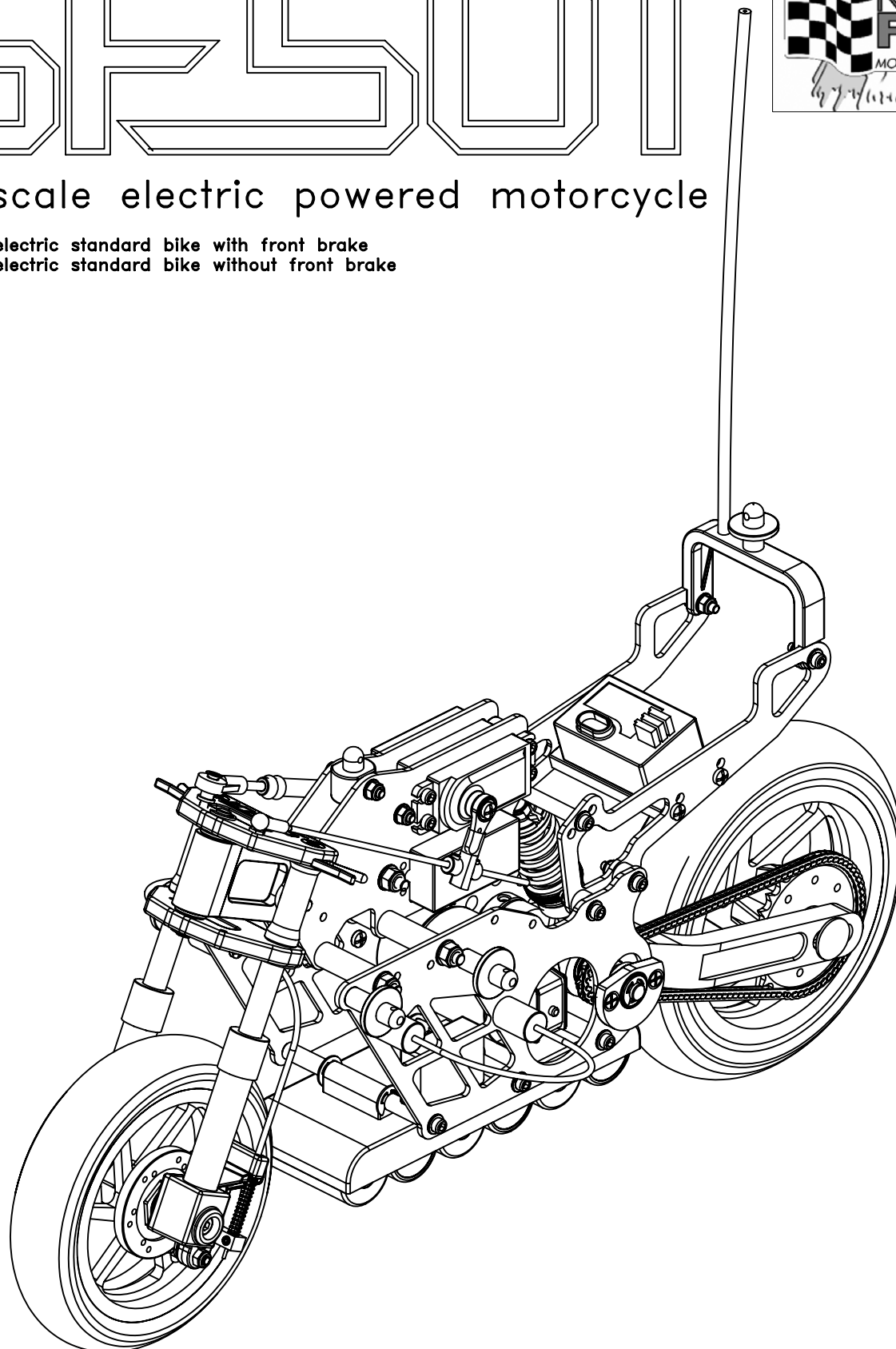


SF501



1/5 scale electric powered motorcycle

- X01 - RC electric standard bike with front brake
- X00 - RC electric standard bike without front brake



MANUALE D'ISTRUZIONI Assembly manual

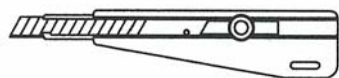
PRIMA DI INIZIARE... **Before starting...**

EQUIPAGGIAMENTO NECESSARIO

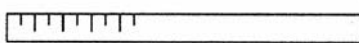
Required tools for assembly 

1. ATTREZZI RICHIESTI PER IL MONTAGGIO E LA MANUTENZIONE:

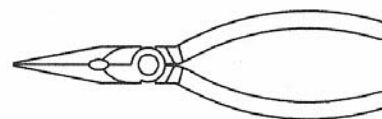
1. Tools required for building and maintenance (all measurements are metric):



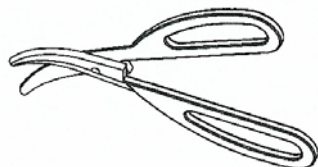
TAGLIERINO
Hobby knife



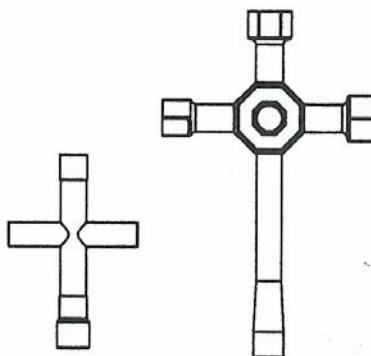
RIGHELLO O CALIBRO
Precision ruler or caliper



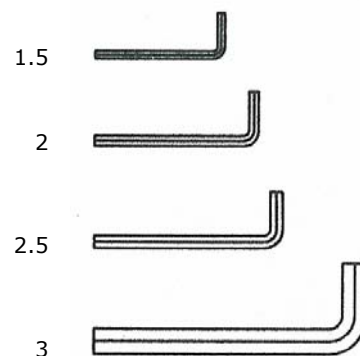
PINZE
Needle nose pliers



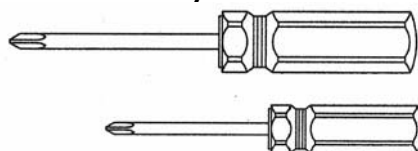
Forbici
Hobby scissors



CHIAVI A TUBO
Cross wrench



CHIAVI A BRUGOLA
Hex wrench



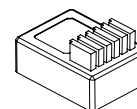
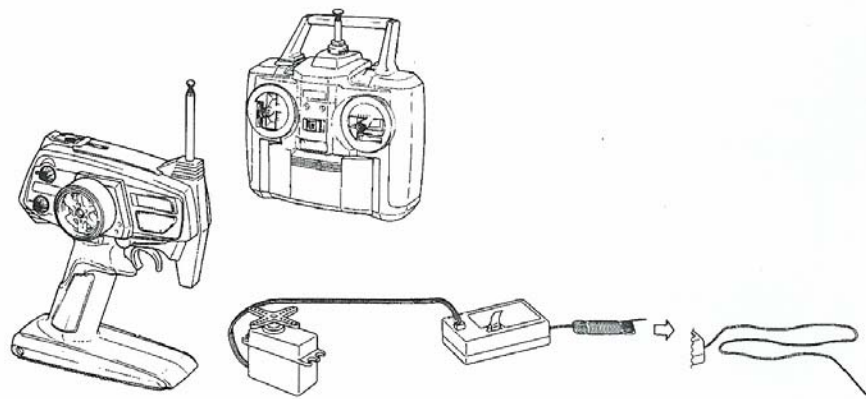
CACCIAVITI
Screw driver

2. ALTRI COMPONENTI NECESSARI PER L'UTILIZZO:

2. Additional items needed for assembly:

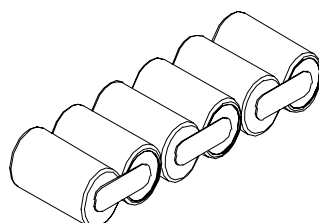
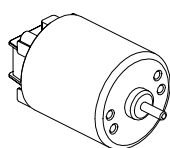
RADIOCOMANDO A 2 CANALI CON 1 SERVOCOMANDO - RICEVENTE - ACCELERATORE PER IL MOTORE ELETTRICO - 8 BATTERIE ALCALINE AA

R/C 2-channel radio system with 1 servo - receiver - speed-control - 8 AA alkaline batteries



MOTORE ELETTRICO - PACCO DI BATTERIE 7,2V - OLIO PER AMMORTIZZATORI E DIFFERENZIALI - COLLANTE CIANACRILICO

Electric motor - 7,2V battery - shock & diff oil - CA glue



H01



H02









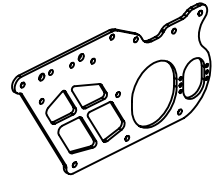
S01

SFS01

ATTENZIONE: QUESTO MODELLO NON E' UN GIOCATTOLO.
Warning: this rc-model is not a toy

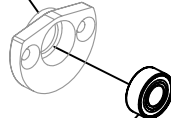
NOTA: "OPT."= PARTI OPZIONALI
Note: "OPT."= optional parts

- X05 N°4 (M3X6) 
- X81 N°8 (2.9X8) 
- X04 N°2 (BAG A) 
- X03 N°2 (BAG A) 
- X83 N°4 (BAG A) 
- X82 N°4 (BAG B) 



X02 N°2 (BAG A)

X03 (X03/A OPT.)



X04



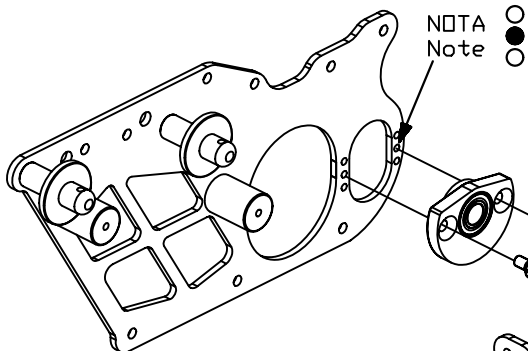
NOTA: N°2
 Note: n°2


X81

X02 (SX-left)

X83

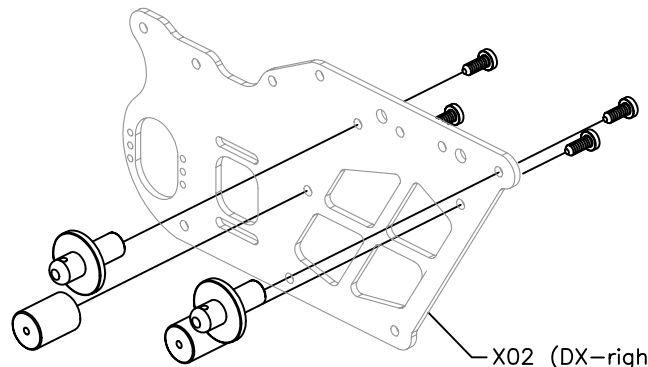
X82 (X82/A OPT.)



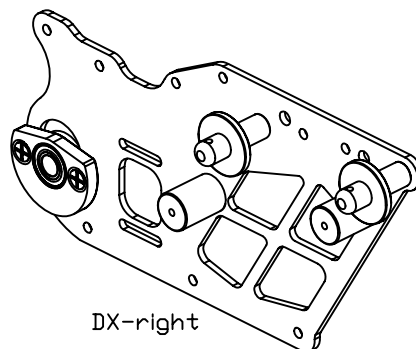
NOTA
 Note 

X05

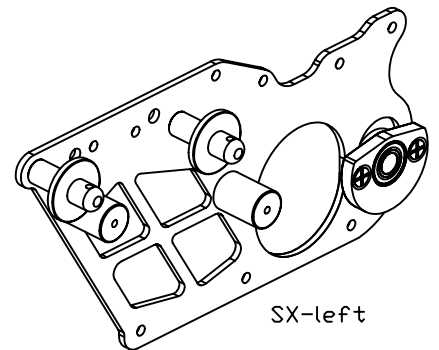
NOTA: N°2 (DX-SX)
 Note: n°2 (right-left)



X02 (DX-right)



DX-right



SX-left

SFS01

X06 N°5 (M3X8)



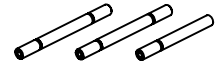
X07 N°7 (D3)



X75 N°2 (M3X20)



X08 N°3



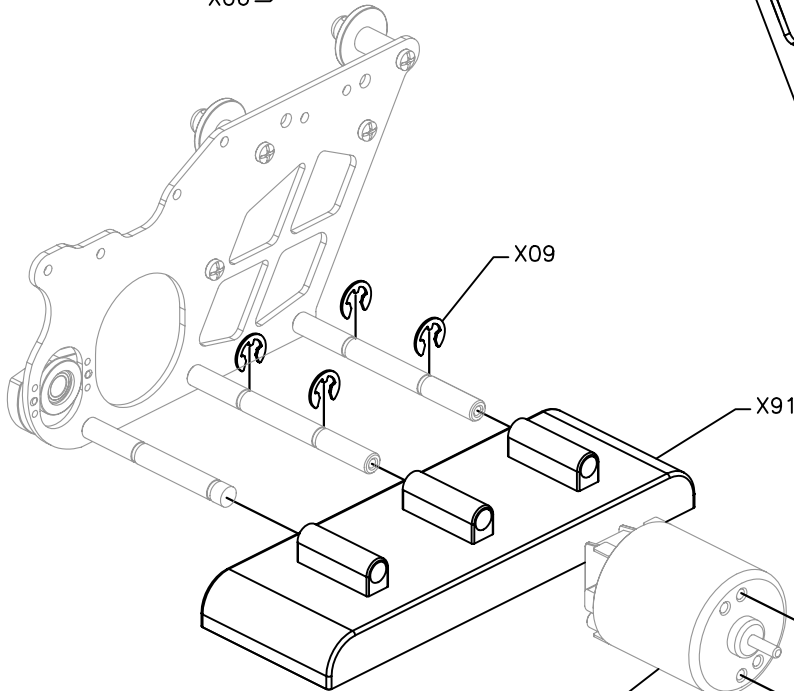
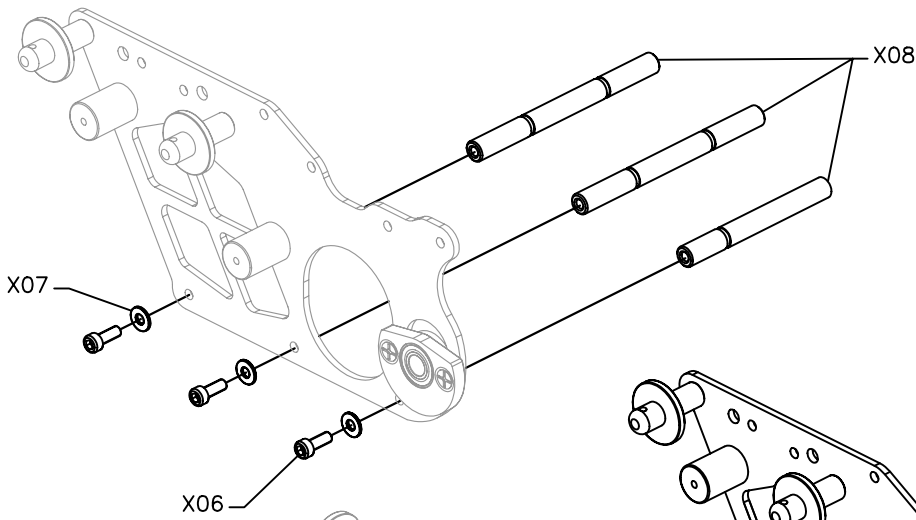
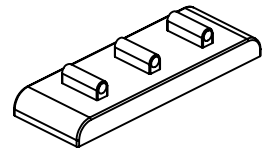
X74 N°1



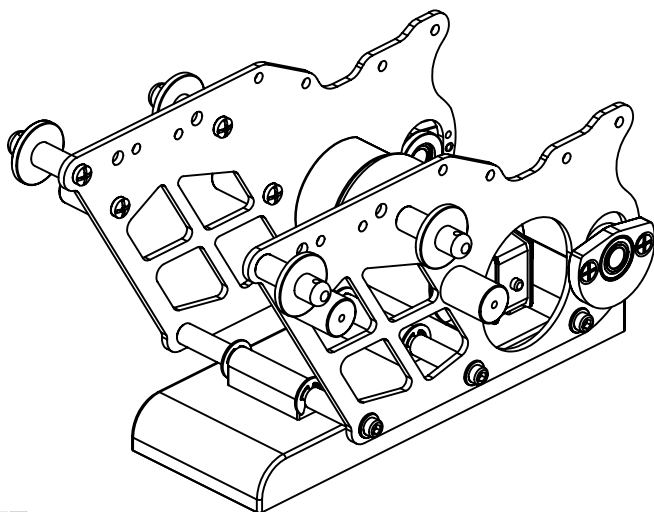
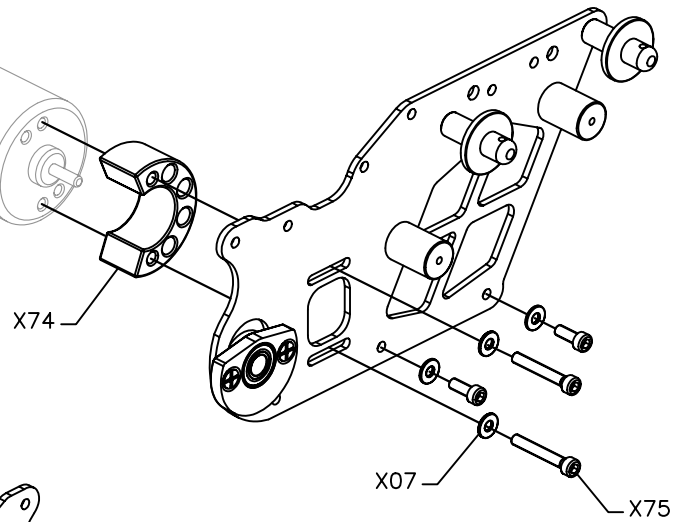
X09 N°4 (D5)



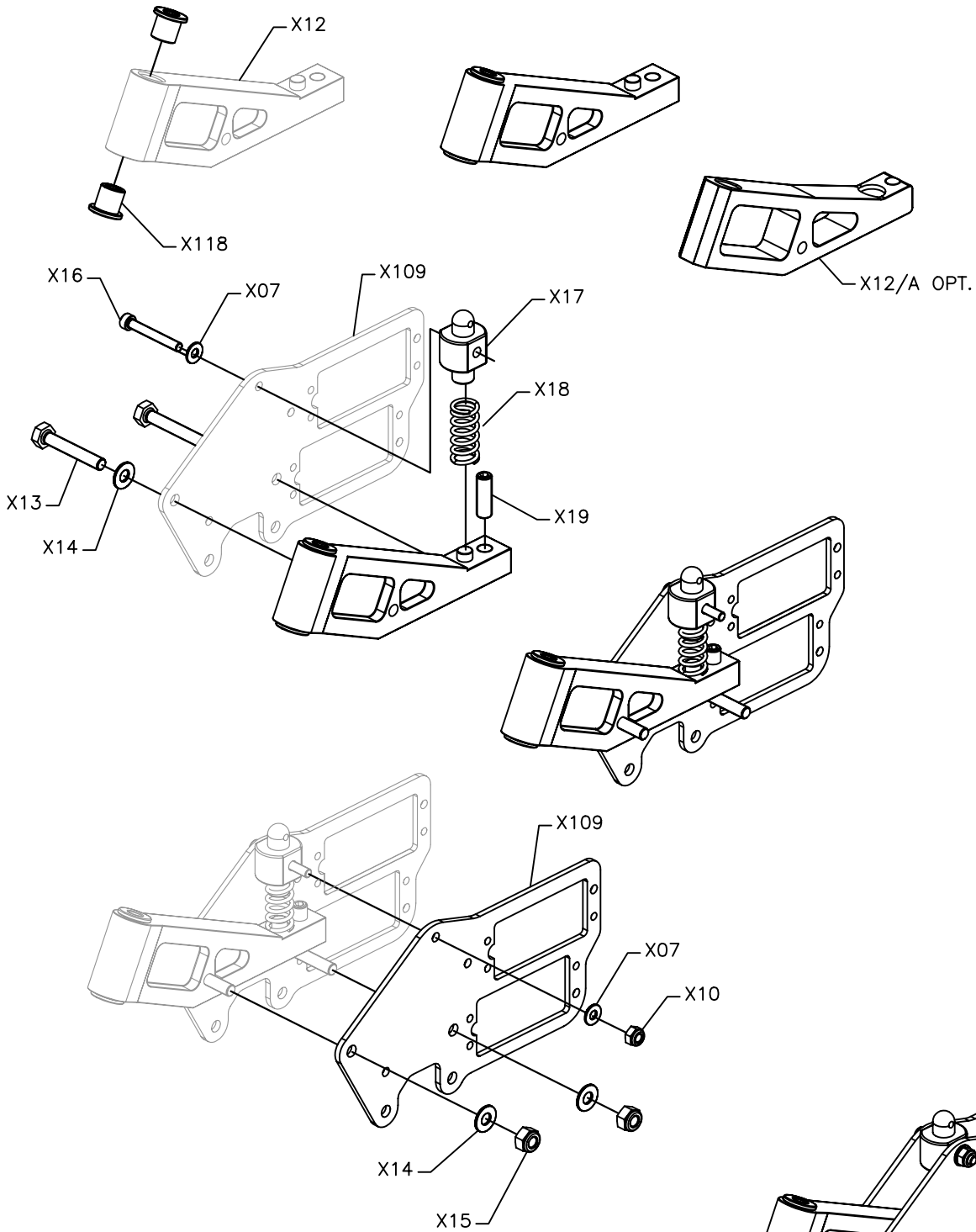
X91 N°1











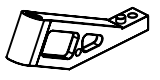
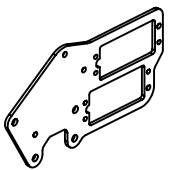


MOTORE (non incluso)
Motor (not included)



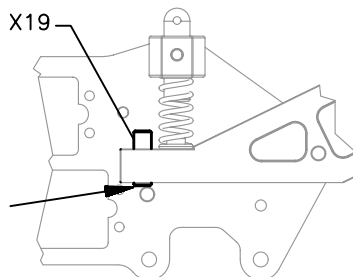
SFS01



- X07 N°2 (D3) 
- X14 N°4 (D4) 
- X10 N°1 (M3) 
- X15 N°2 (M4) 
- X16 N°1 (M3X22) 
- X13 N°2 (M4X25) 
- X19 N°1 (M5X15) 
- X18 N°1 (BAG B) 
- X118 N°2 (BAG B) 
- X17 N°1 (BAG B) 
- X12 N°1 (BAG B) 
- X109 N°2 (BAG B) 

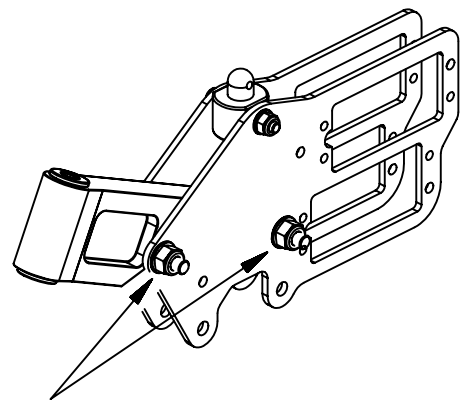
NOTA:
SI PUD' AGIRE SUL GRAND
X19 PER REGOLARE
L'INCLINAZIONE DELLA
FORCELLA

Note:
adjust screw X19 to
alter front fork pitch





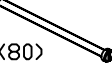


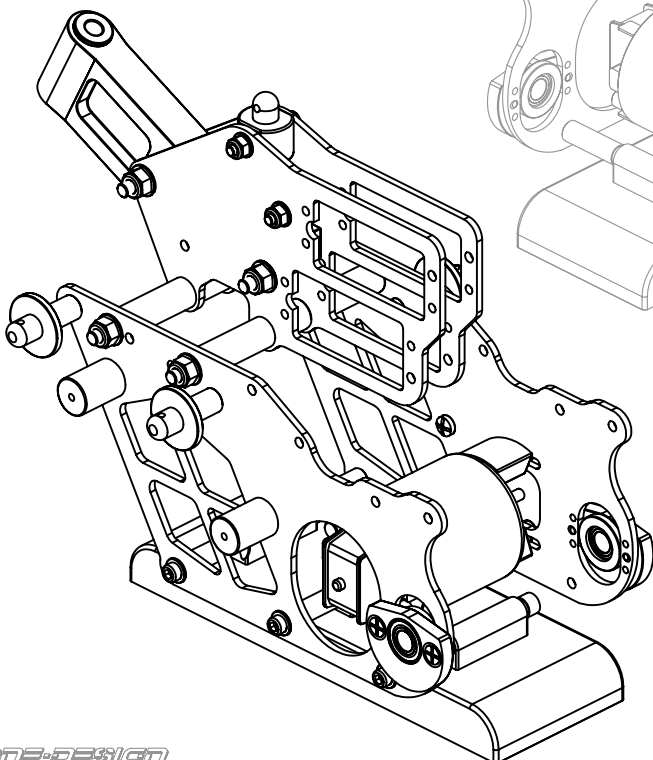
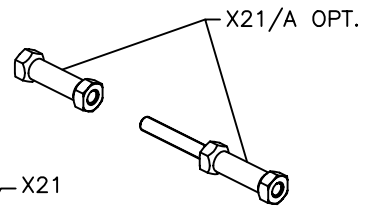
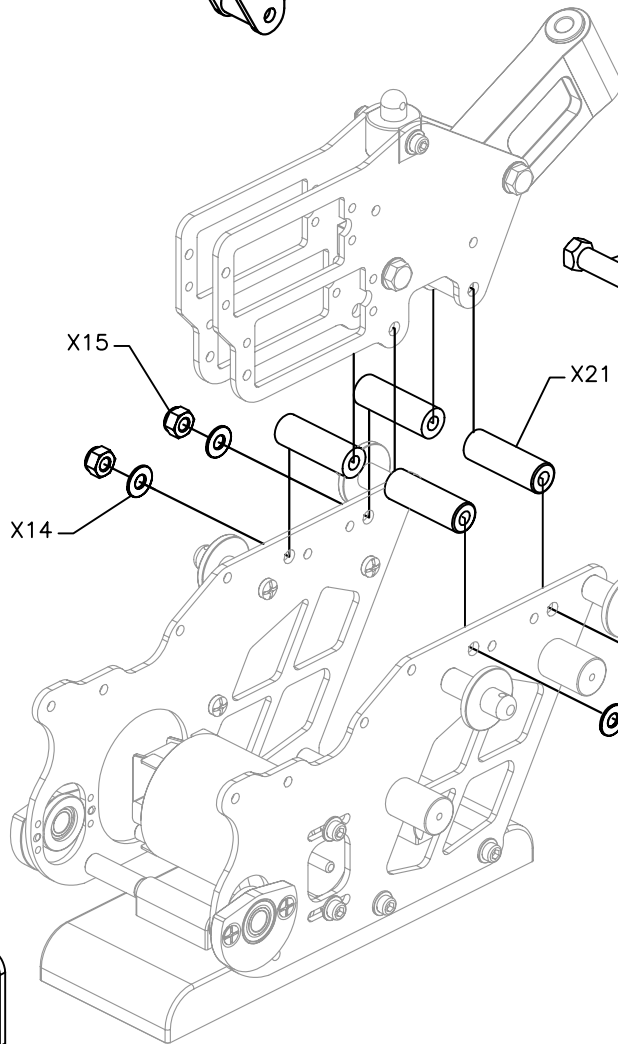
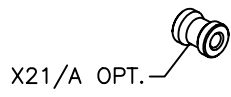
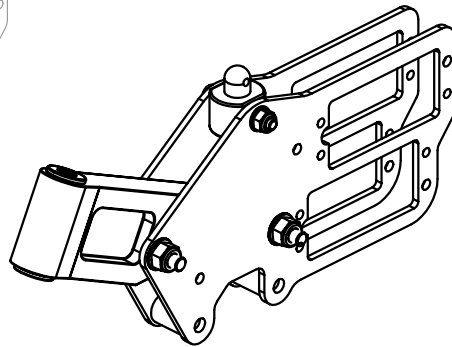
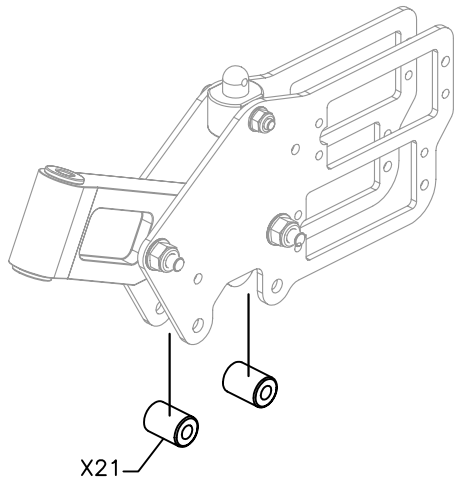
NOTA:
NON STRINGERE - NON
LASCIARE GIOCO TRA IL
DADO E LA SPALLINA

Note:
tighten until snug - do
not overtighten - free
movement is necessary
for X12

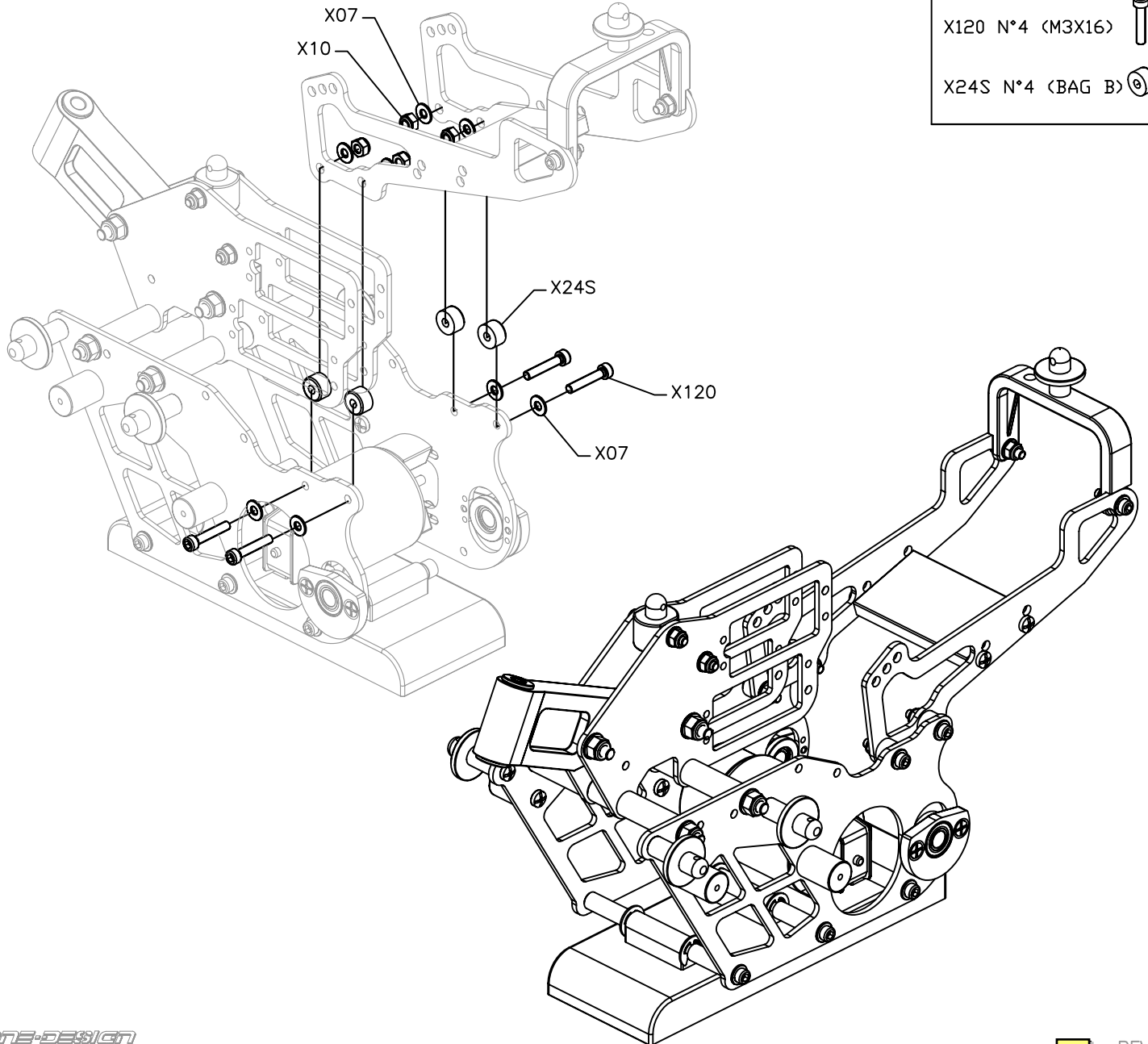
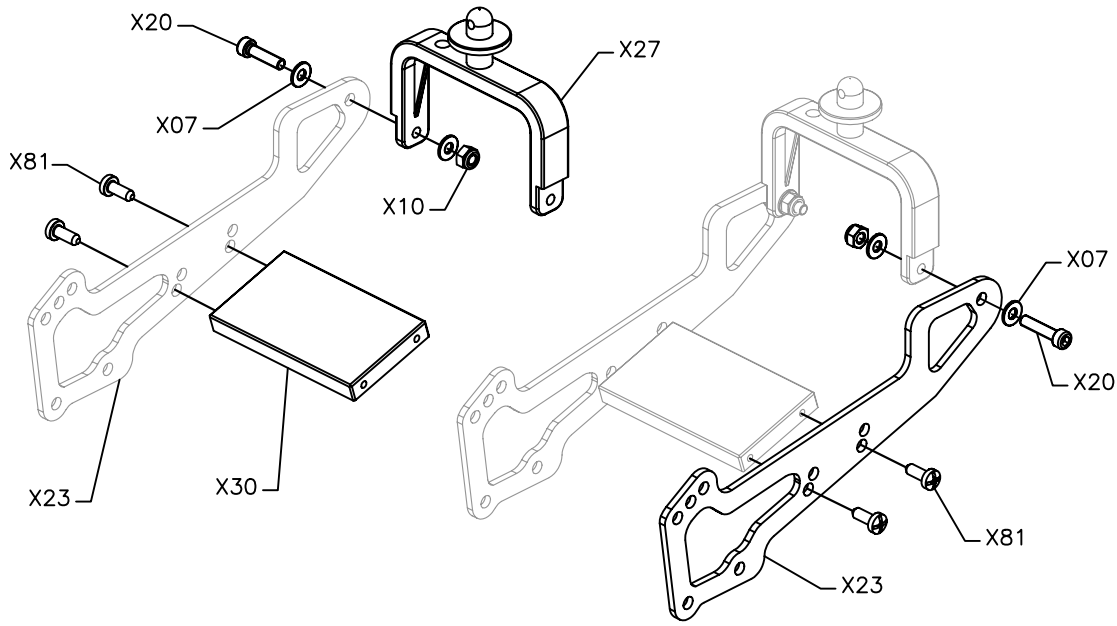






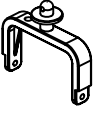

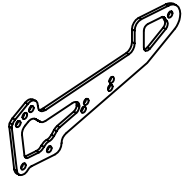


SFS01

- X15 N°2 (M4) 
- X14 N°4 (D4) 
- X21 N°4 (BAG B) 
- X21 N°2 (BAG B) 
- X22 N°2 (M4X80) 

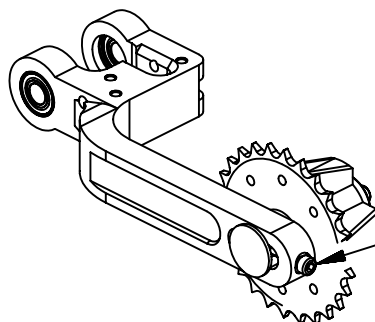
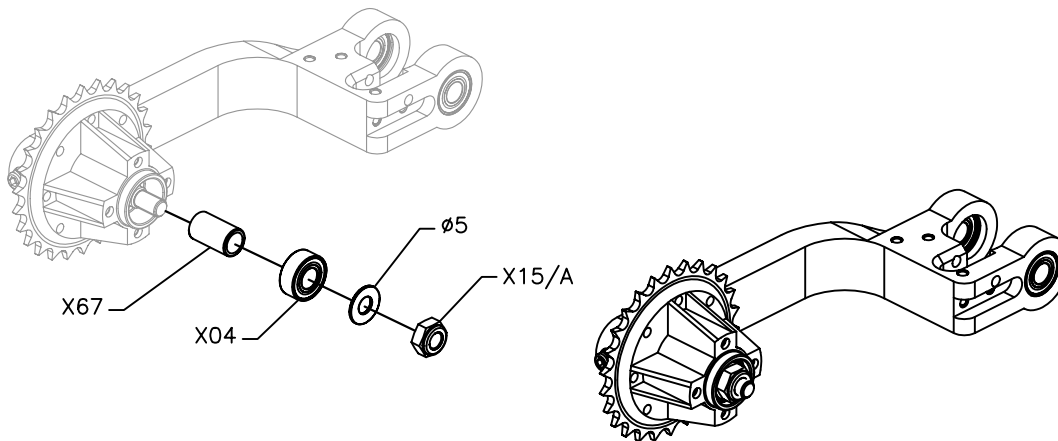
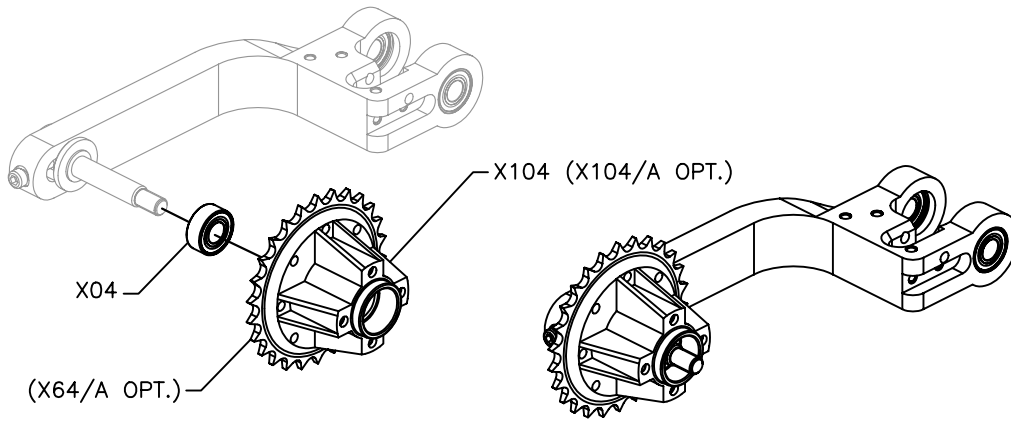
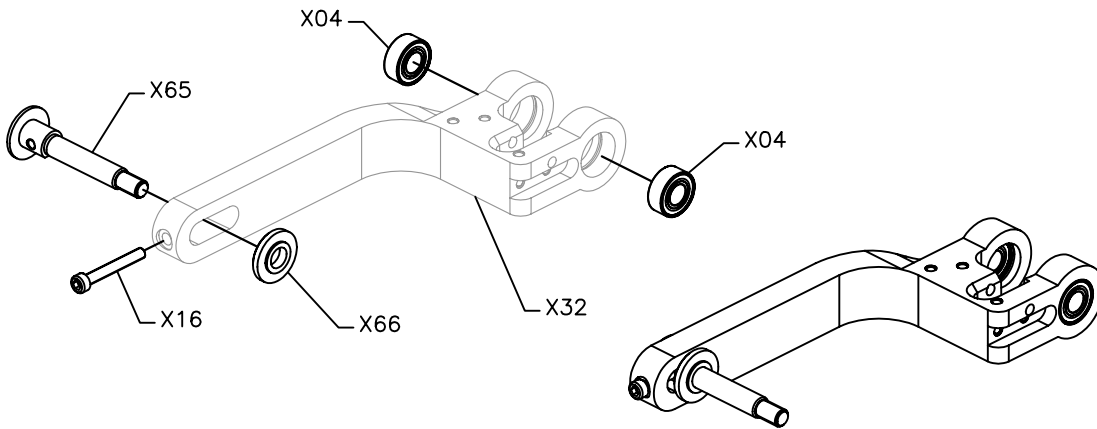


SFS01









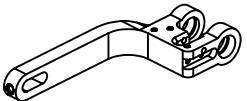


- X07 N°12 (D3) 
- X10 N°6 (M3) 
- X81 N°4 (2.9X8) 
- X20 N°2 (M3X12) 
- X27 N°1 (BAG C) 
- X30 N°1 (BAG C) 
- X23 N°2 (BAG C) 
- X120 N°4 (M3X16) 
- X24S N°4 (BAG B) 




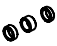





SFS01

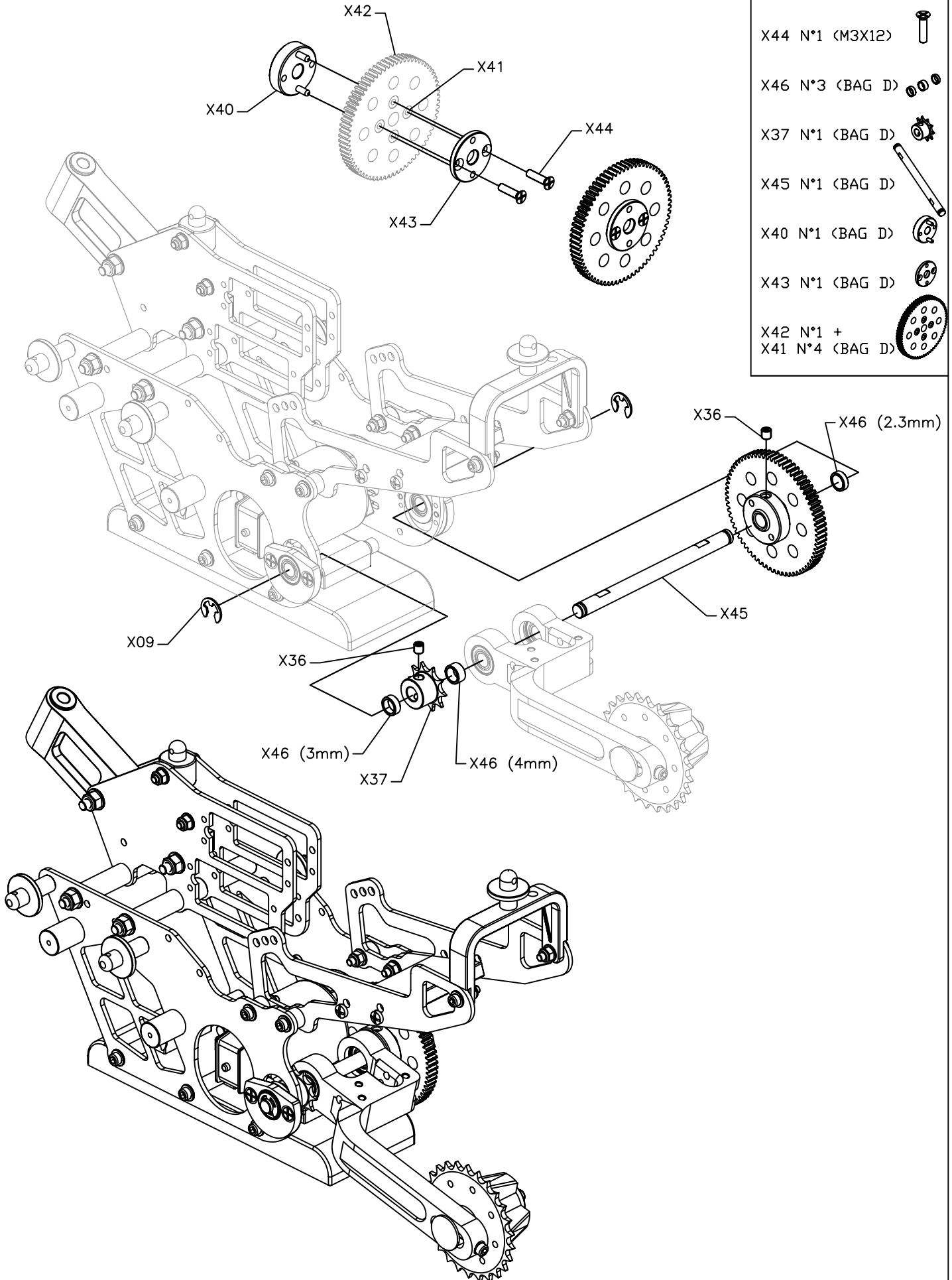


NOTA:
 AGIRE SU QUESTA VITE PER REGOLARE
 LA TENSIONE DELLA CATENA
 Note:
 screw adjusts chain strain

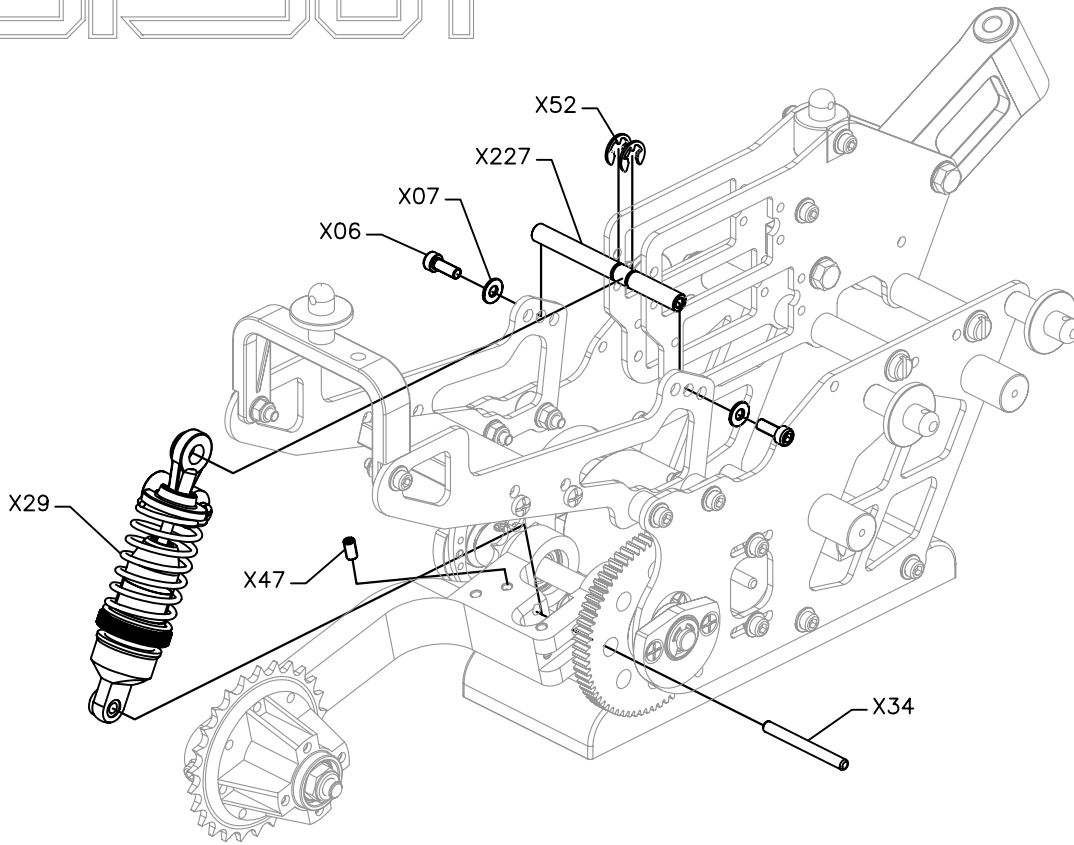
- X16 N°1 (M3X22) 
- X15/A N°1 (M5) 
- Ø5 N°1 
- X66 N°1 (BAG F) 
- X67 N°1 (BAG F) 
- X65 N°1 (BAG F) 
- X104 N°1 (BAG F) 
- X04 N°4 (BAG D) 
- X32 N°1 (BAG D) 






SFS01

- X36 N°2 (M4X4) 
- X09 N°2 (BAG D) 
- X44 N°1 (M3X12) 
- X46 N°3 (BAG D) 
- X37 N°1 (BAG D) 
- X45 N°1 (BAG D) 
- X40 N°1 (BAG D) 
- X43 N°1 (BAG D) 
- X42 N°1 +
X41 N°4 (BAG D) 




SFS01



- X06 N°2 (M3X8) 
- X47 N°1 (M3X6) 
- X07 N°2 (D3) 
- X52 N°2 (BAG C) 
- X209 N°1 (BAG D) 



X227 N°1 (BAG C)

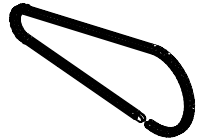
X34 N°1 (BAG D) 



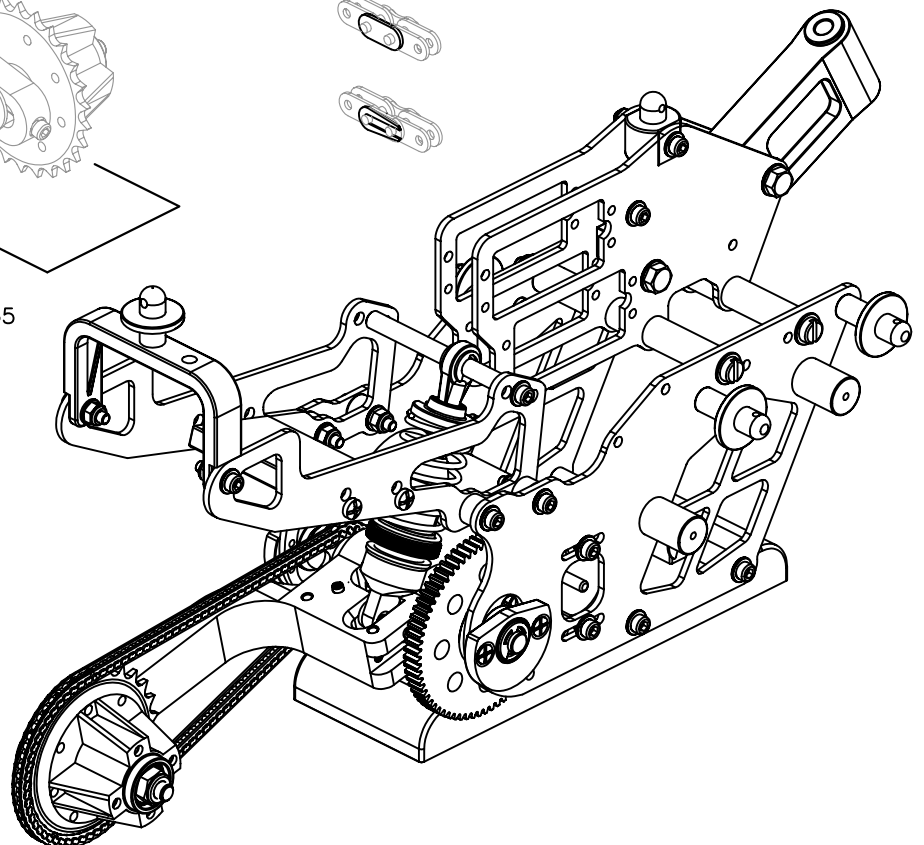
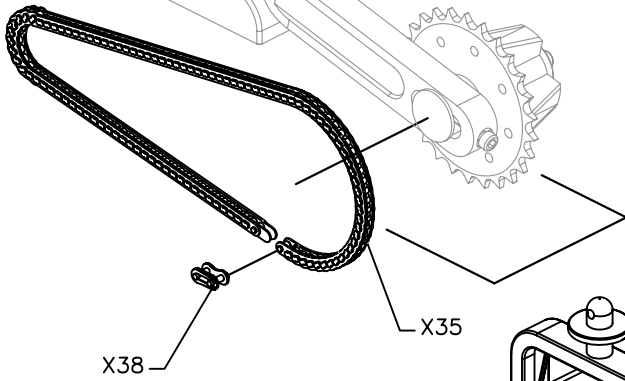
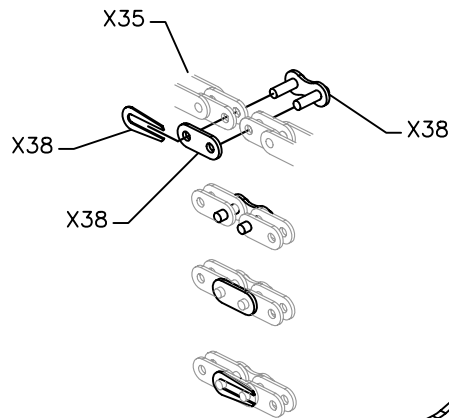
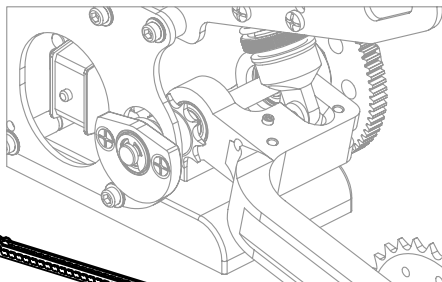
X29 N°1 (BAG C)



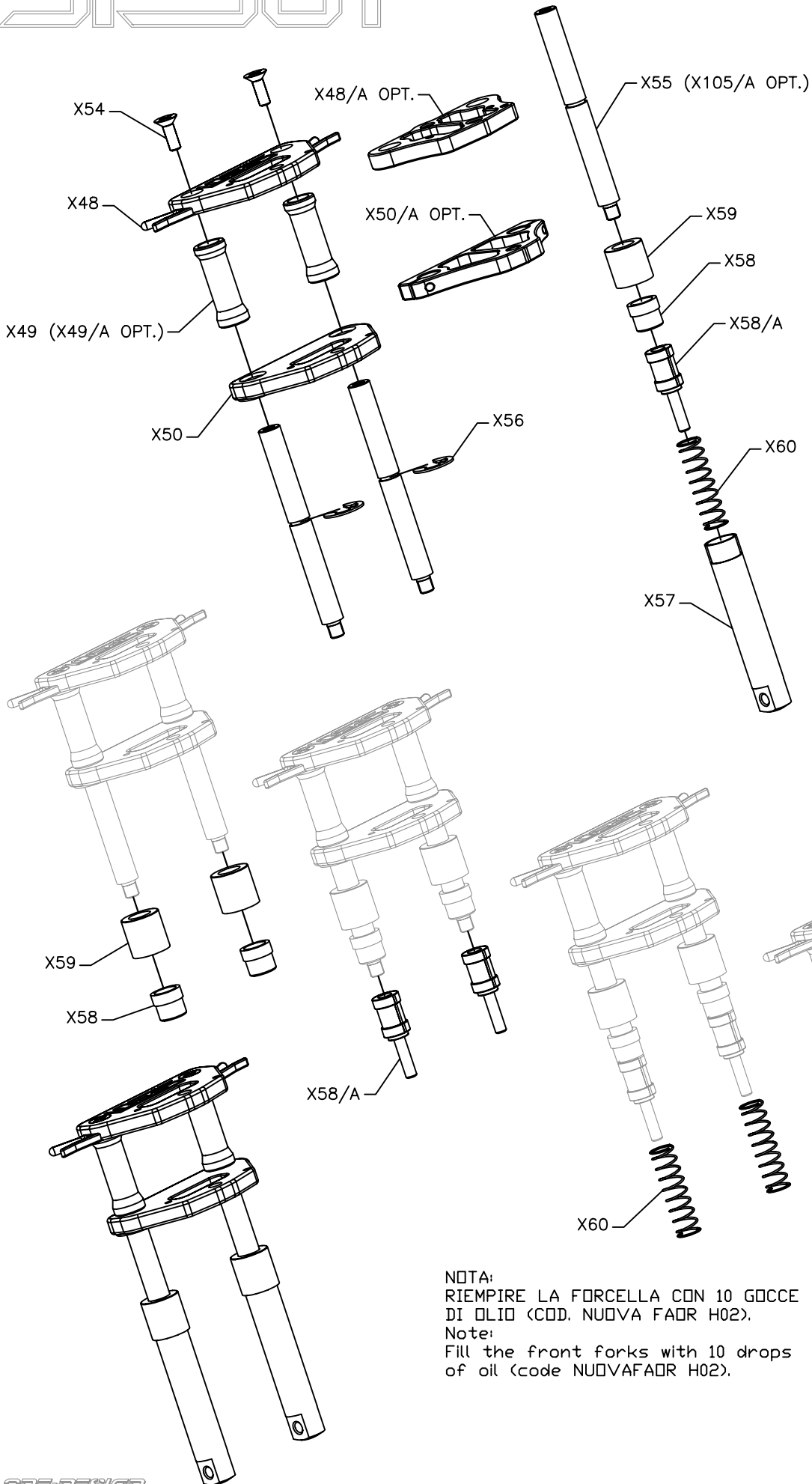
X38 N°1 (BAG D)









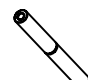


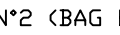


X35 N°1 (BAG D)



SFS01

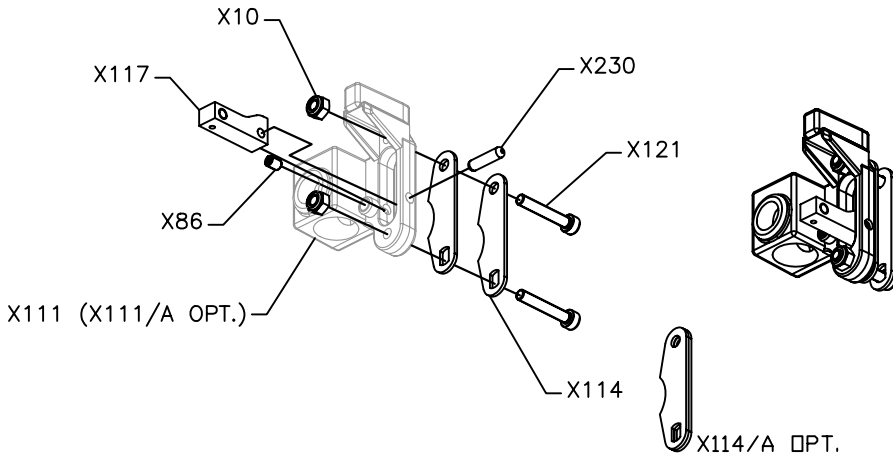








- X56 N°2 (BAG E) 
- X54 N°2 (M4X16) 
- X59 N°2 (BAG E) 
- X58 N°2 (BAG E) 
- X58/A N°2 (BAG E) 
- X60 N°2 (BAG E) 
- X49 N°2 (BAG E) 
- X57 N°2 (BAG E) 
- X55 N°2 (BAG E) 
- X50 N°2 (BAG E) 
- X50 N°2 (BAG E) 
- X48 N°2 (BAG E) 

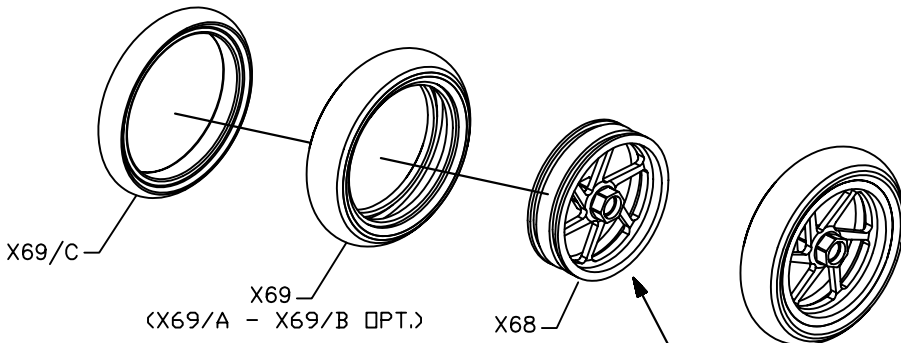
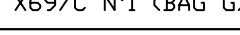
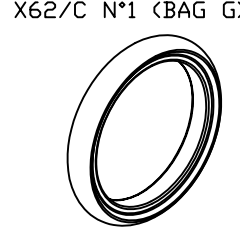
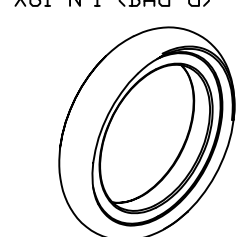
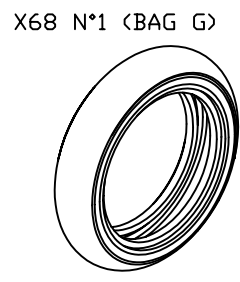
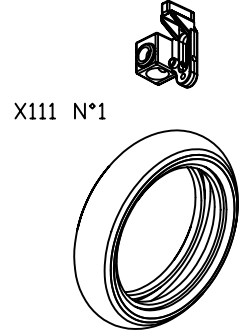
NOTA:
RIEMPIRE LA FORCELLA CON 10 GOCCE
DI OLIO (COD. NUOVA FADR H02).
Note:
Fill the front forks with 10 drops
of oil (code NUOVAFA0R H02).

SFS01

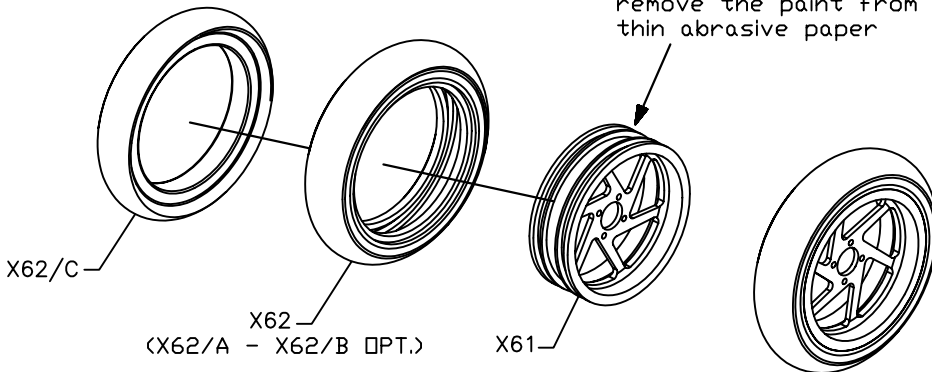
NOTA:
SOLO PER MODELLO X01
FRENO ANTERIORE X107 (OPZIONALE)
Note:
only for X01 bike version
front brake X107 (optional)



- X121 N°2 (M3X18) 
- X10 N°2 (M3) 
- X86 N°1 (M3X4) 
- X230 N°1 
- X117 N°1 
- X114 N°2 



NOTA:
PRIMA DI INCOLLARE TOGLIERE IL
COLORE DAL CERCHIO CON CARTA
ABRASIVA FINE
Note:
before adhering tyres with glue
remove the paint from the rims with
thin abrasive paper



NOTA:
INCOLLARE LE GOMME CON COLLA CIANACRILICA (COD. NUOVAFAOR S02)
Note:
glue the tyres on the rims using CA glue (code NUOVAFAOR S02)

SFS01

NOTA:
 SOLO PER VERSIONE X01
 FRENO ANTERIORE X107 (OPZIONALE)
 Note:
 only for X01 bike version
 front brake X107 (optional)

X70 N°2 (M4X16)



X04 N°2 (BAG G)



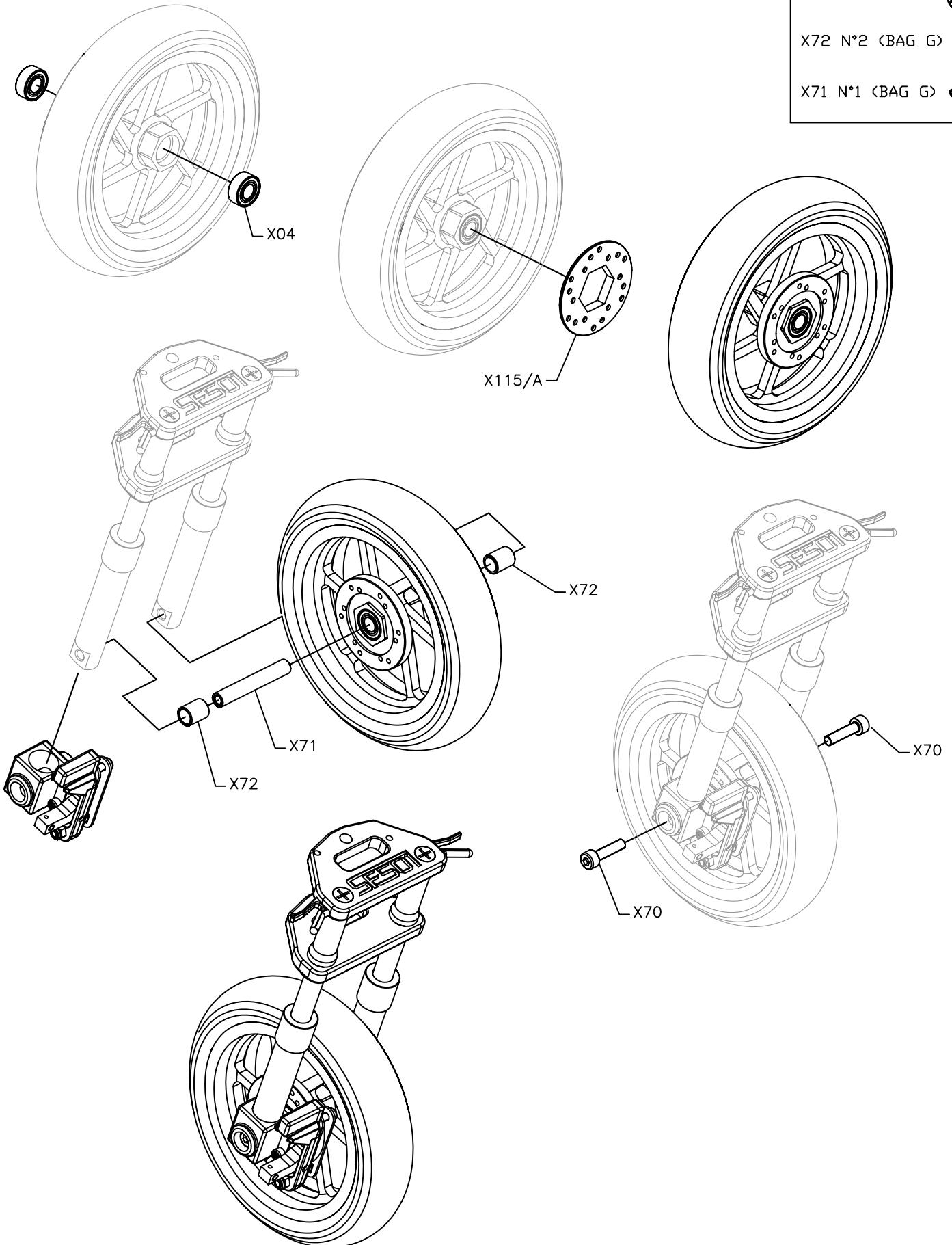
X115 N°1



X72 N°2 (BAG G)




X71 N°1 (BAG G)

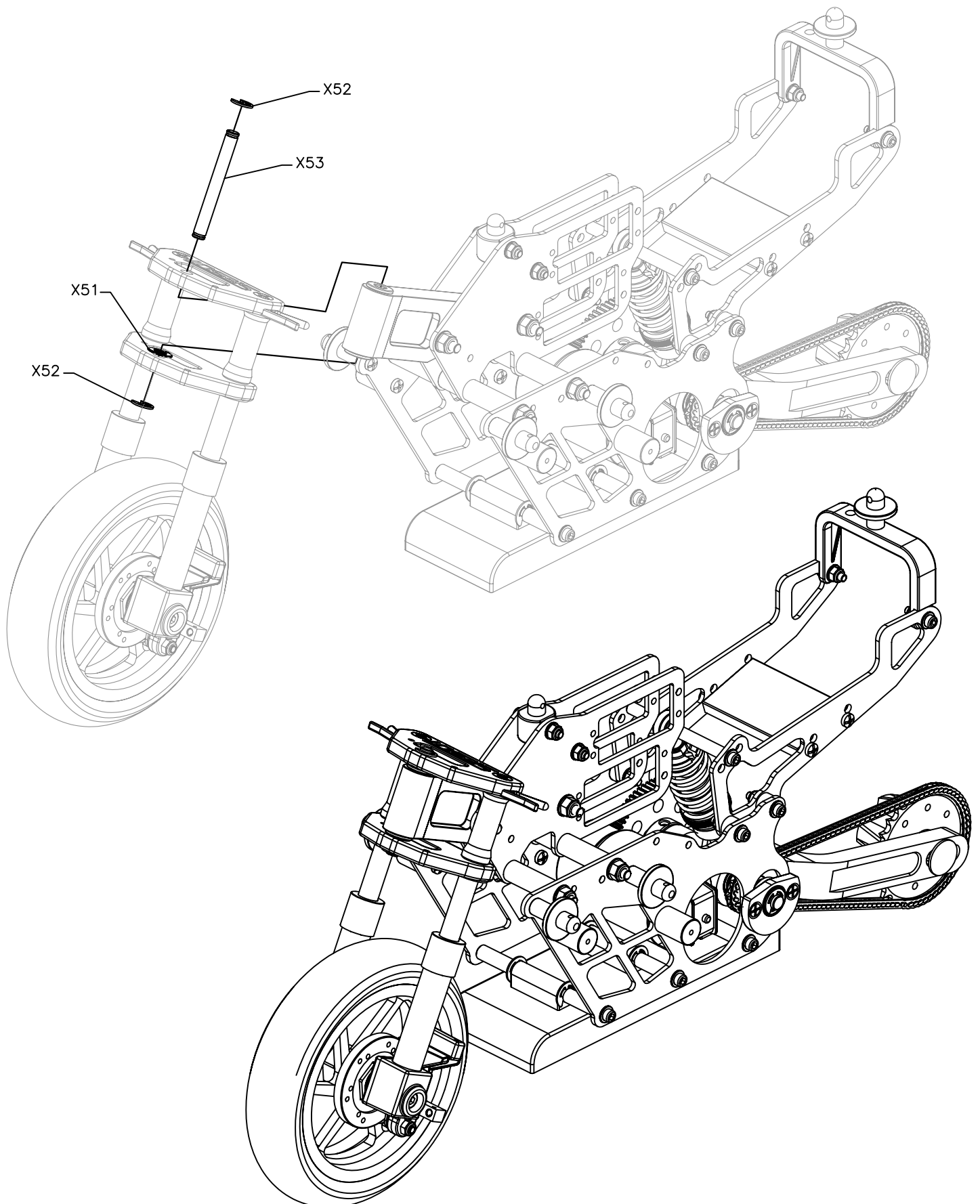


SFS01

X51 N°1 (BAG E) 

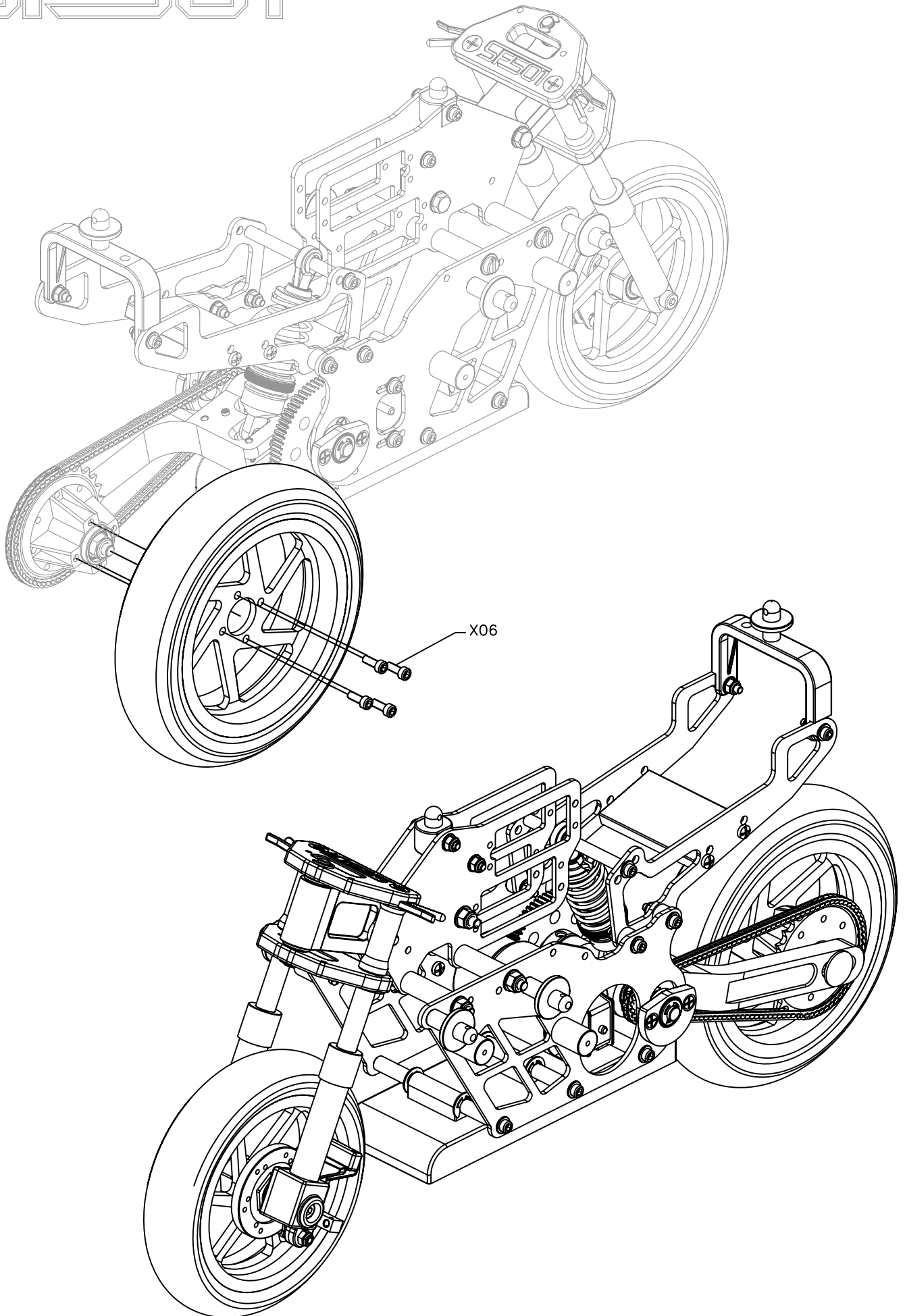
X52 N°2 (BAG E) 

X53 N°1 (BAG E) 






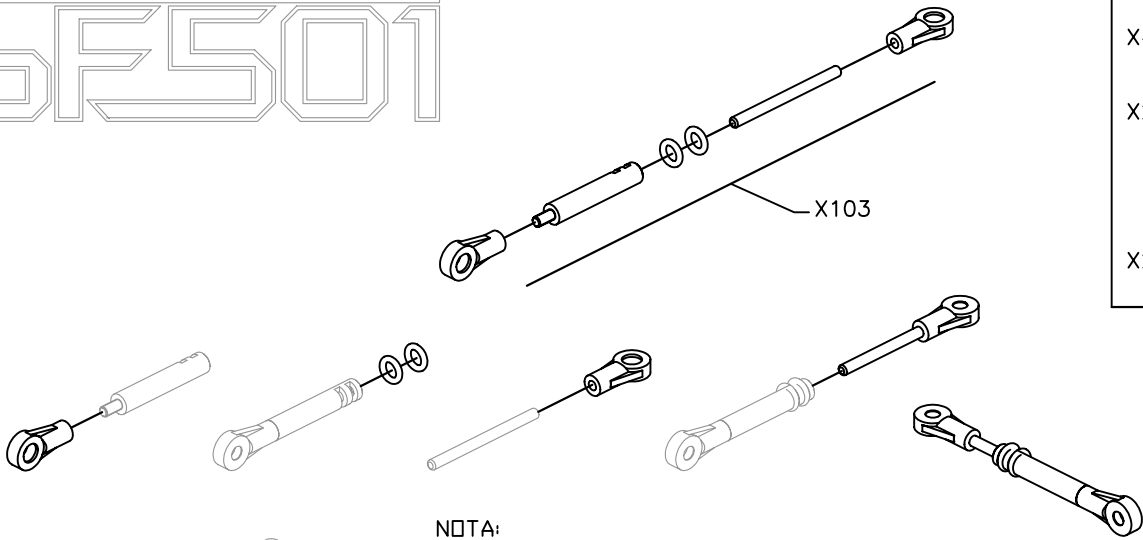
SFS01

X06 N°4 (M3X8)

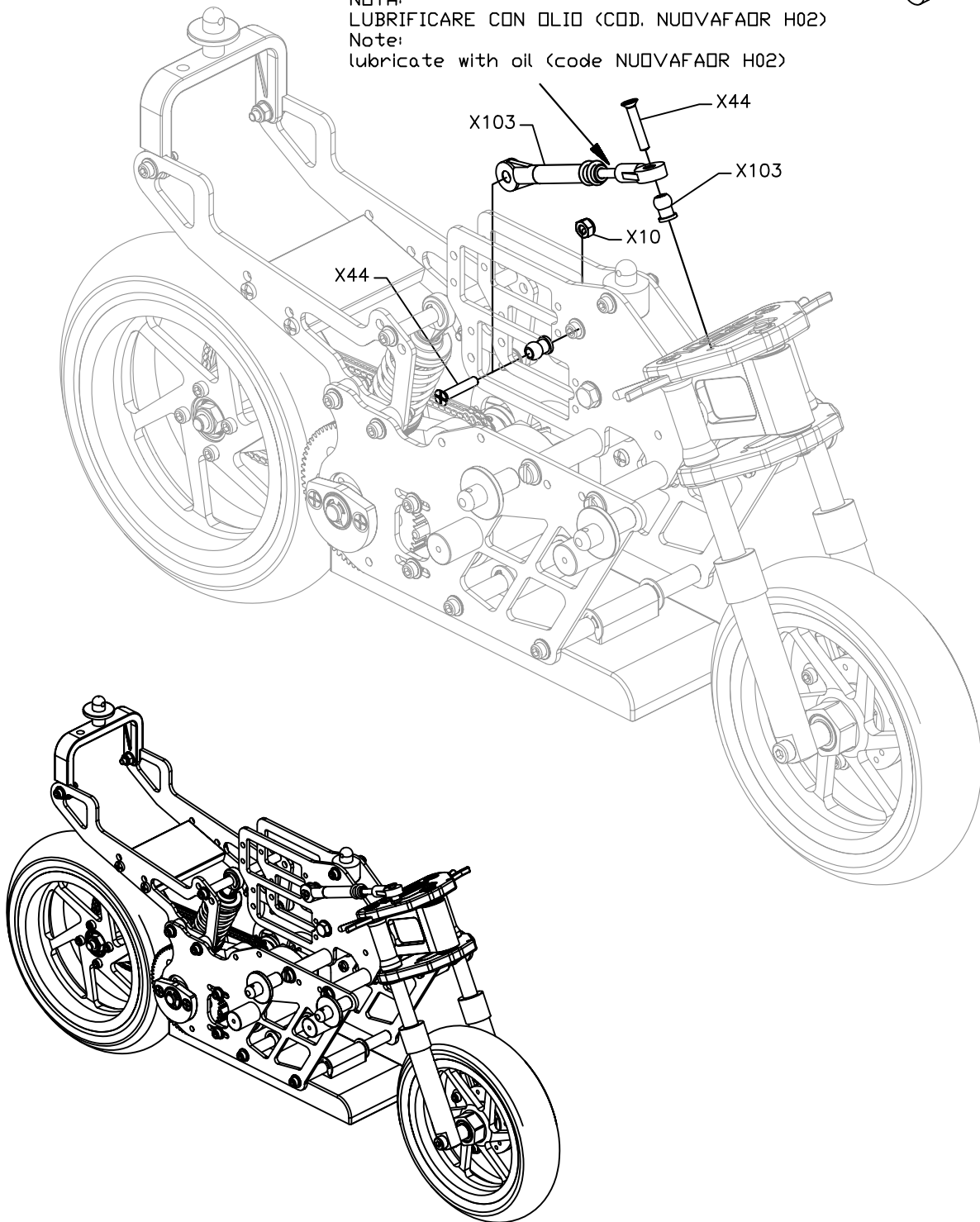


SFS01

- X44 N°2 (M3X16) 
- X10 N°1 (M3) 
- X103 N°1 



NOTA:
LUBRIFICARE CON OLIO (COD. NUOVAFAOR H02)
Note:
lubricate with oil (code NUOVAFAOR H02)



SFS01

NOTA:
SOLO PER X01 - SE NON SI USA IL FRENO ANTERIORE USARE IL SERVO COMANDO DELLO
STERZO NELLA POSIZIONE PIU' BASSA - VEDI ANCHE PAG 18

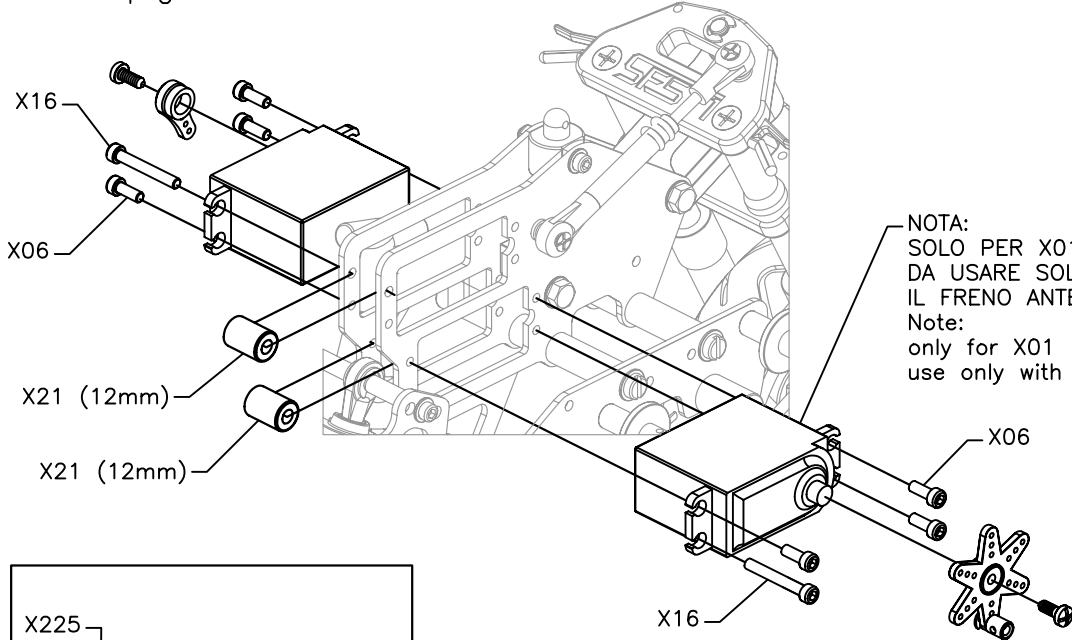
Note:
only for X01 - if you don't use front brake place the servo in the lower position
- see also on page 18

X16 N°2 (M3X22)

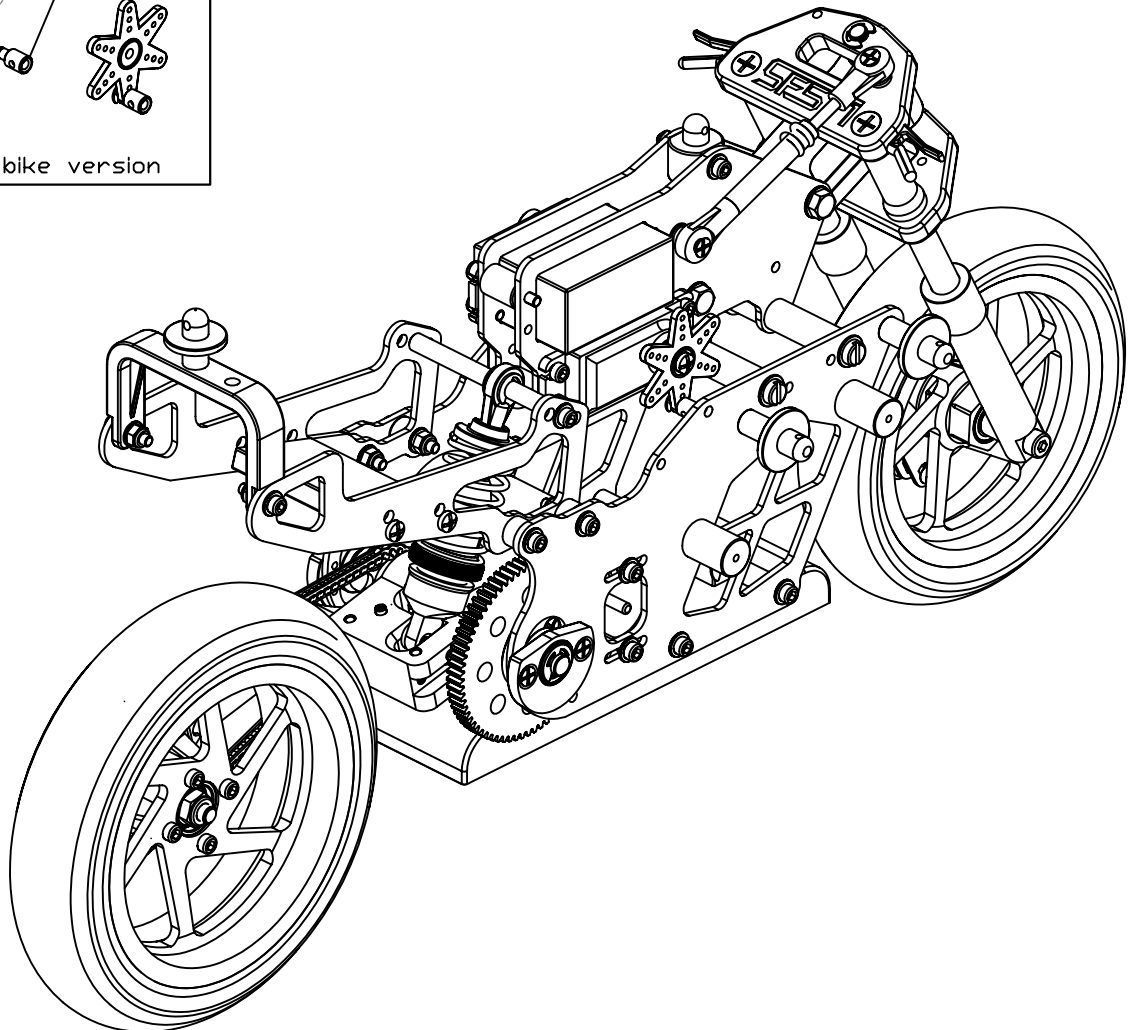
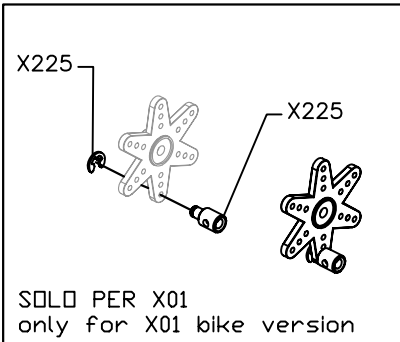
X06 N°6 (M3X8)

X21 N°2 (BAG B)

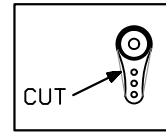
X225 N°1
(SOLO PER X01
only for X01)








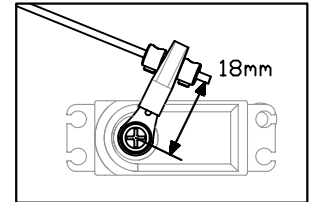
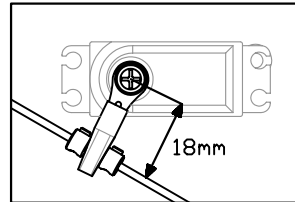
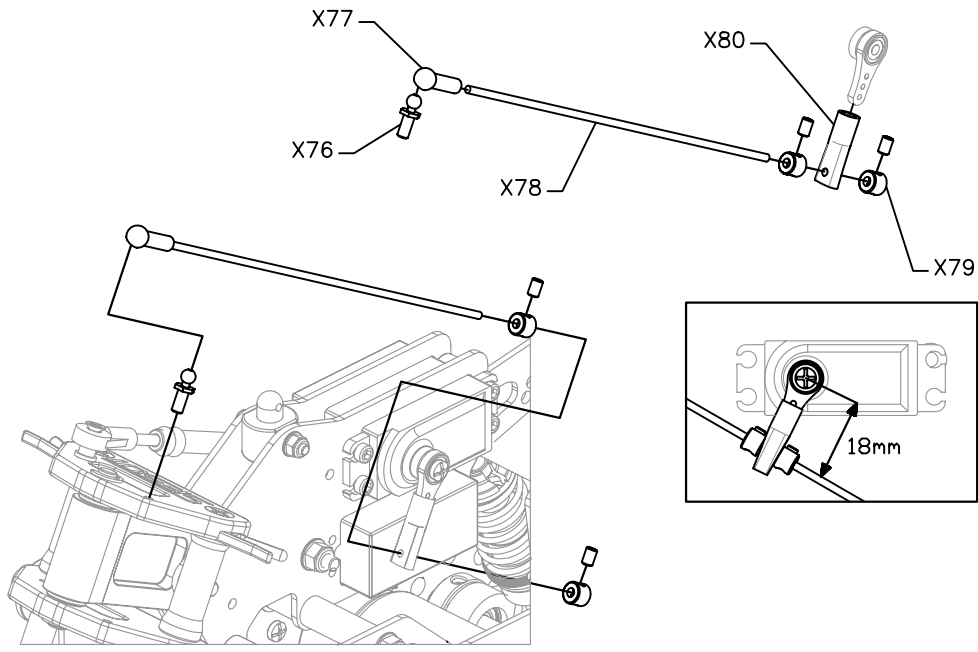
NOTA:
SOLO PER X01 -
DA USARE SOLO SE SI USA
IL FRENO ANTERIORE
Note:
only for X01 bike version
use only with front brake



SFS01

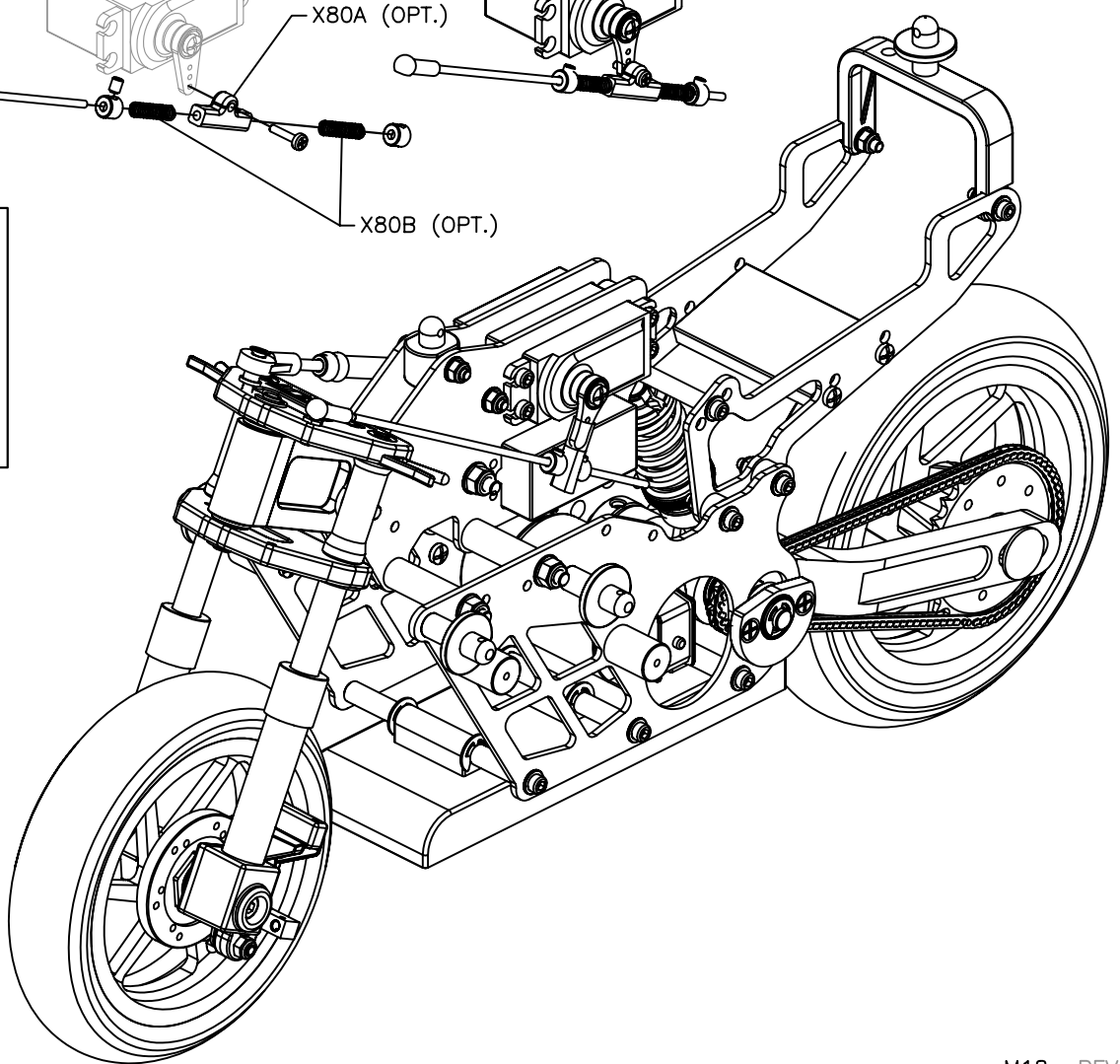
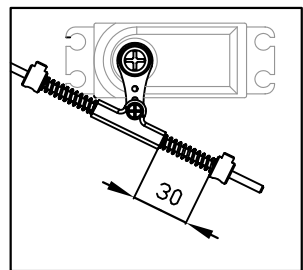
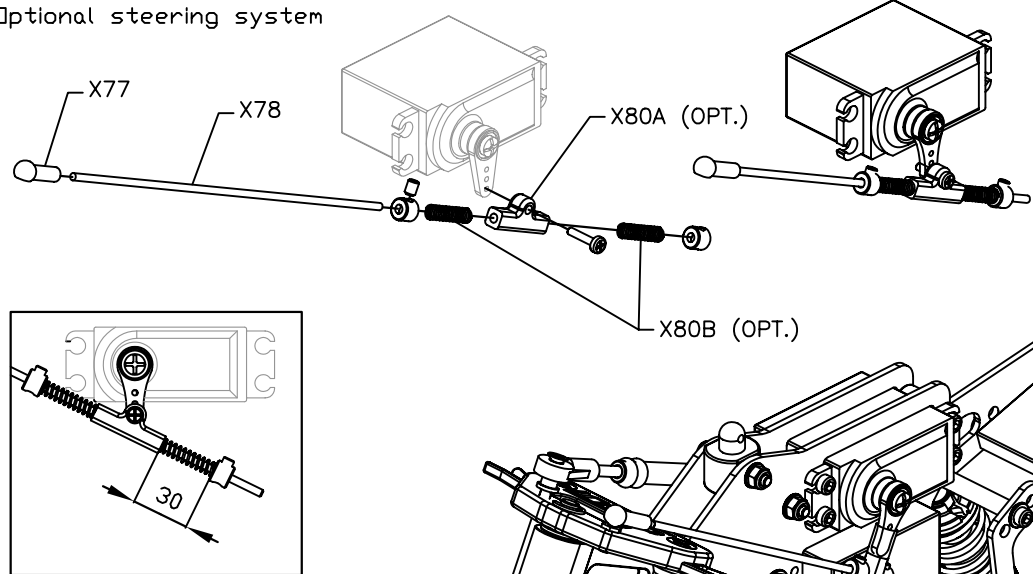


- X79 N°2 
- X76 N°1 
- X77 N°1 
- X80 N°1 
- X78 N°1 



NOTA:
 POSIZIONE SQUADRETTA
 SE NON SI USA IL
 FRENO ANTERIORE
 (SERVO NELLA SEDE
 PIÙ IN BASSO)
 Note:
 position of the
 steering rod if you
 don't use the front
 brake (servo in the
 lower position)

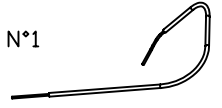
SISTEMA DI STERZO OPZIONALE Optional steering system



SFS01

NOTA:
SOLO PER MODELLO X01
FRENO ANTERIORE X107 (OPZIONALE)
Note:
only for X01 bike version
front brake X107 (optional)

X110 N°1



X112 N°1



X86 N°2 (M3X4)



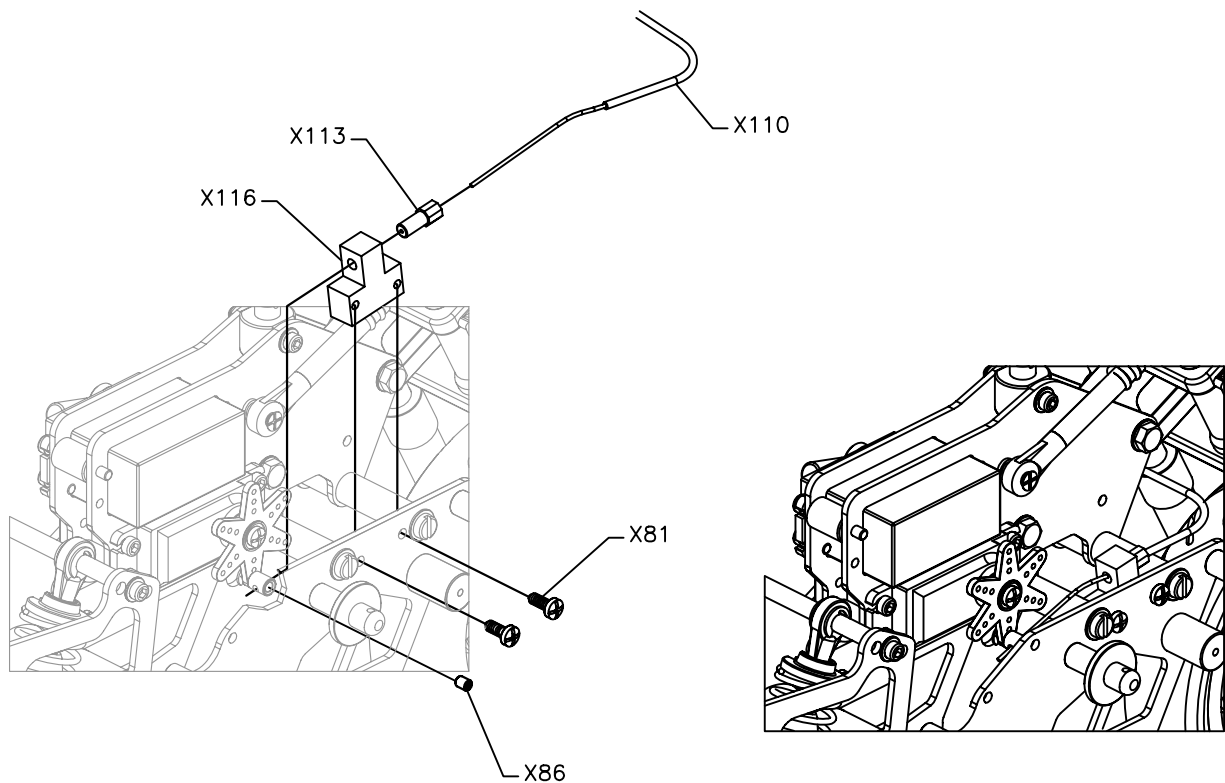
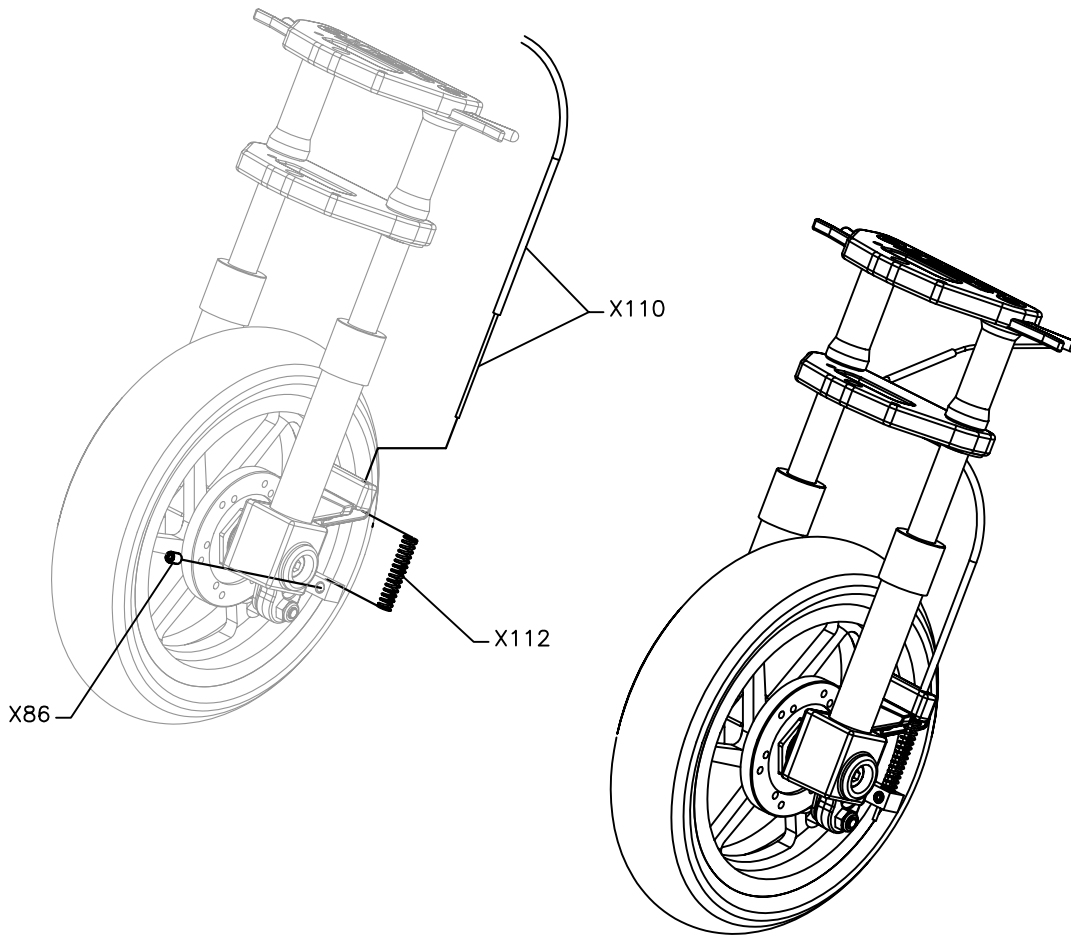
X81 N°2 (2.9X8)



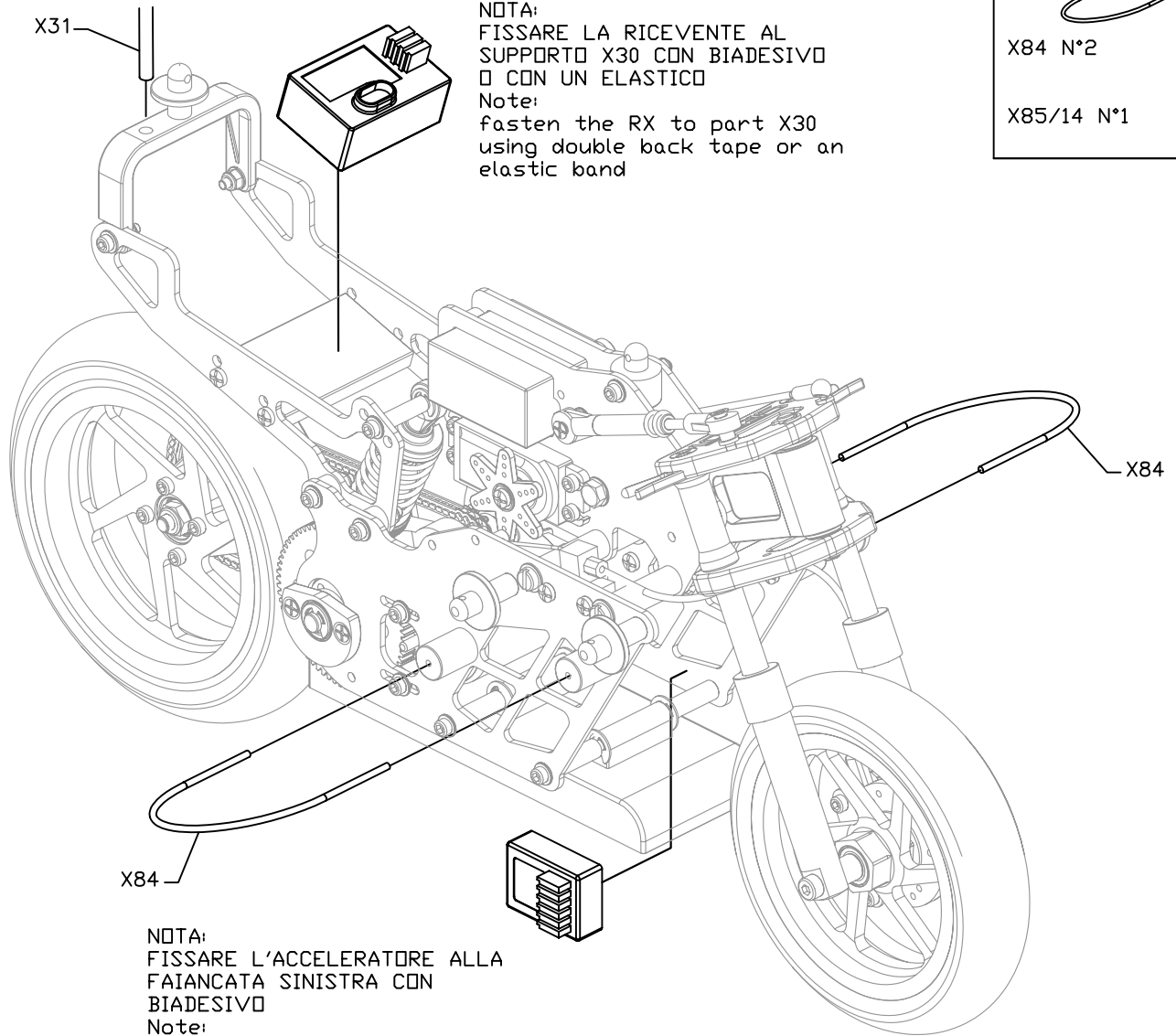
X113 N°1



X116 N°1



SFS01



X31 N°1 (BAG C)



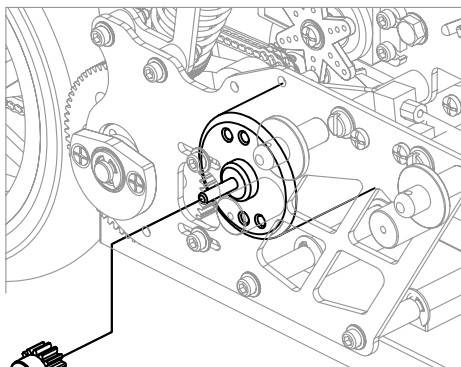
X84 N°2

X85/14 N°1

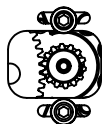


NOTA:
FISSARE LA RICEVENTE AL
SUPPORTO X30 CON BIADESIVO
O CON UN ELASTICO
Note:
fasten the RX to part X30
using double back tape or an
elastic band

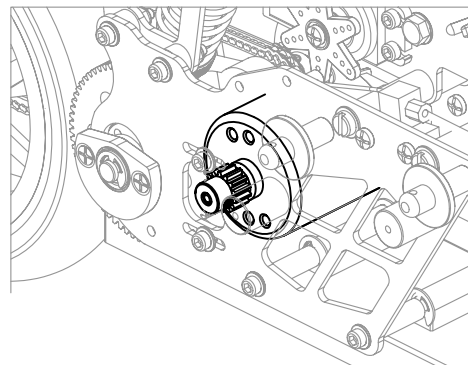
NOTA:
FISSARE L'ACCELERATORE ALLA
FAIANCATA SINISTRA CON
BIADESIVO
Note:
fasten the electronic speed
controller to the motorcycle
frame using double back tape



X85/14
(X85/13-X85/14 OPT.)

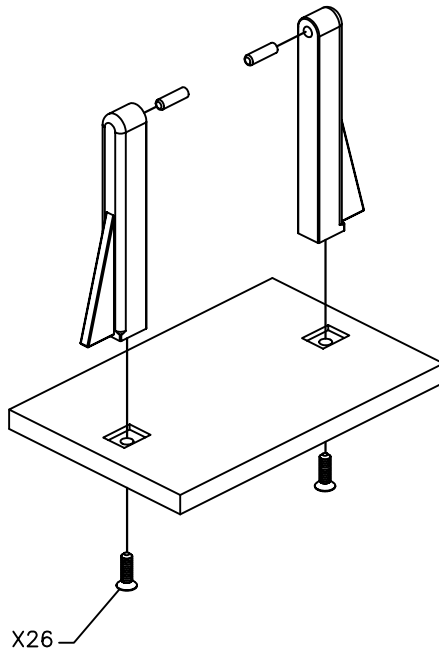
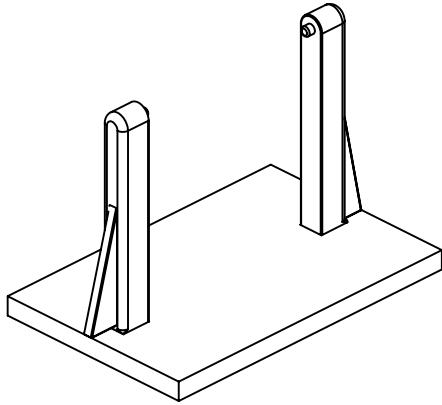


NOTA:
VERIFICATE IL GIOCO TRA
PIGNONE E CORDONA!
Note:
set the proper gear mesh!

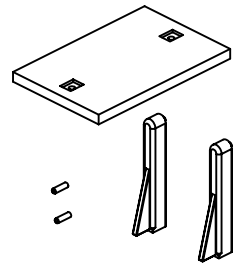


SFS01

X87 (SUPPORTO MOTO)
X87 (bike holder)

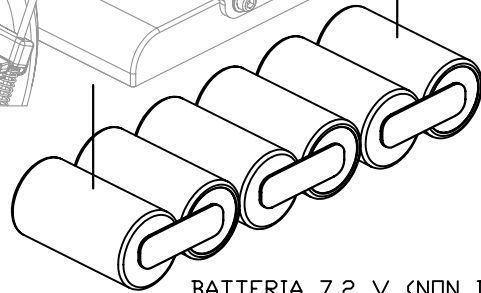
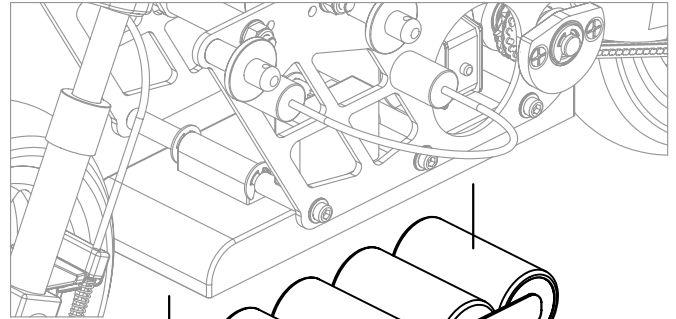


X26 3X10 N°2



X87 N°1 (SUPPORTO)

NOTA:
FISSARE LA BATTERIA AL
SUPPORTO CON DUE ELASTICI
Note:
fasten the battery to the
bike using two elastic bands



BATTERIA 7,2 V (NON INCLUSA)
7,2V battery (not included)

